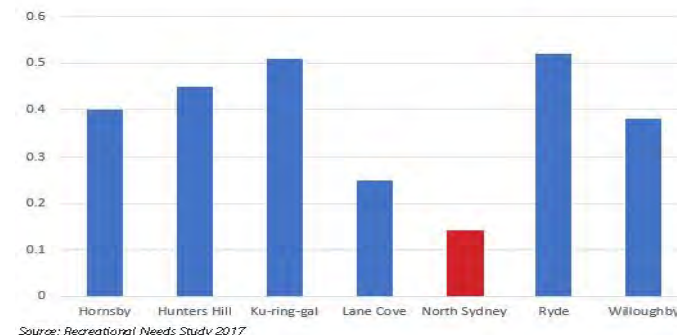




## NORTH SYDNEY

- Largest Urban Motorway
- Local connections
- Harbour connection
- Improving Public Transport
- Growing Population
- Limited Green Space
- 22 Schools (>10,000 kids)
- 54 Childcare Centres



## PROPOSED TUNNELS & MOTORWAY EXPANSION – UPDATE

Bay Precinct (Camberay)  
Paul Walter, Co-convenor  
21 November 2023


## Recreation space per person by LGA

# BEACHES TUNNEL CANCELLED – SO, WILL THE DESIGN IMPROVE?!

1. **SPACE** >3000 Trees + Parkland 4.3 Hectares destroyed Cammeray Park
2. **STREETS** Widespread local traffic impacts
3. **SMOG** Tunnel Exhaust Stacks + Surface traffic
4. **SENSE** Cost/Benefit Refer to Auditor General and Infrastructure NSW



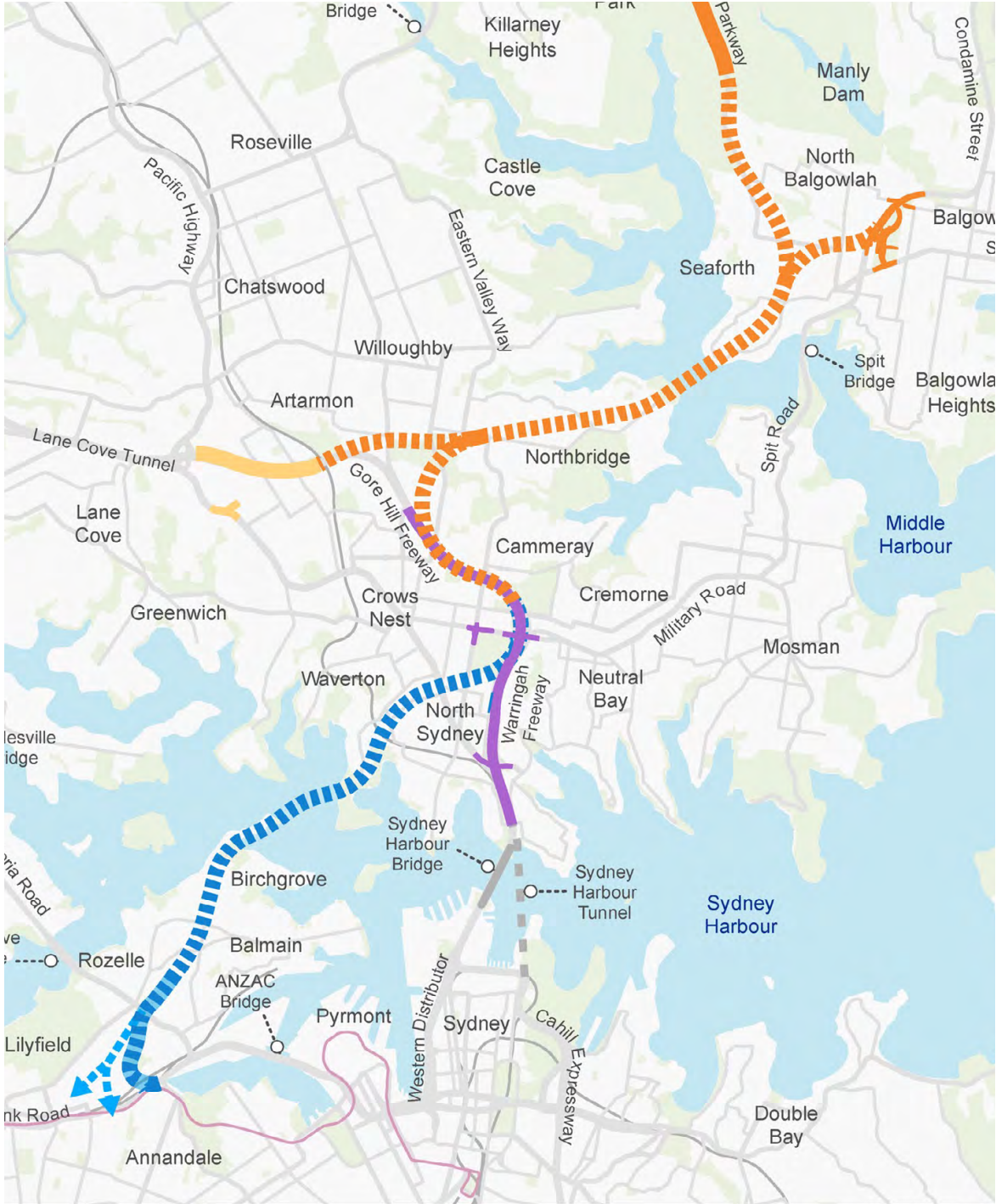
# THREE PROJECTS, ONE CORRIDOR:

-  Beaches Link BLT
-  Western Harbour Tunnel WHT
-  Warringah Freeway Upgrade WFU

BLT 'CANCELLED'

WHT Contract signed prior to state election

WFU Largely complete



Source: Place, Design and Landscape Plan.  
Warringah Freeway Upgrade





Over 3,000 trees and 4.3 hectares of heritage listed parkland is being destroyed for a partially cancelled project which increases traffic congestion and pollution in dense and growing areas.





# WESTCONNEX TUNNEL PROJECT (South end of WHT)



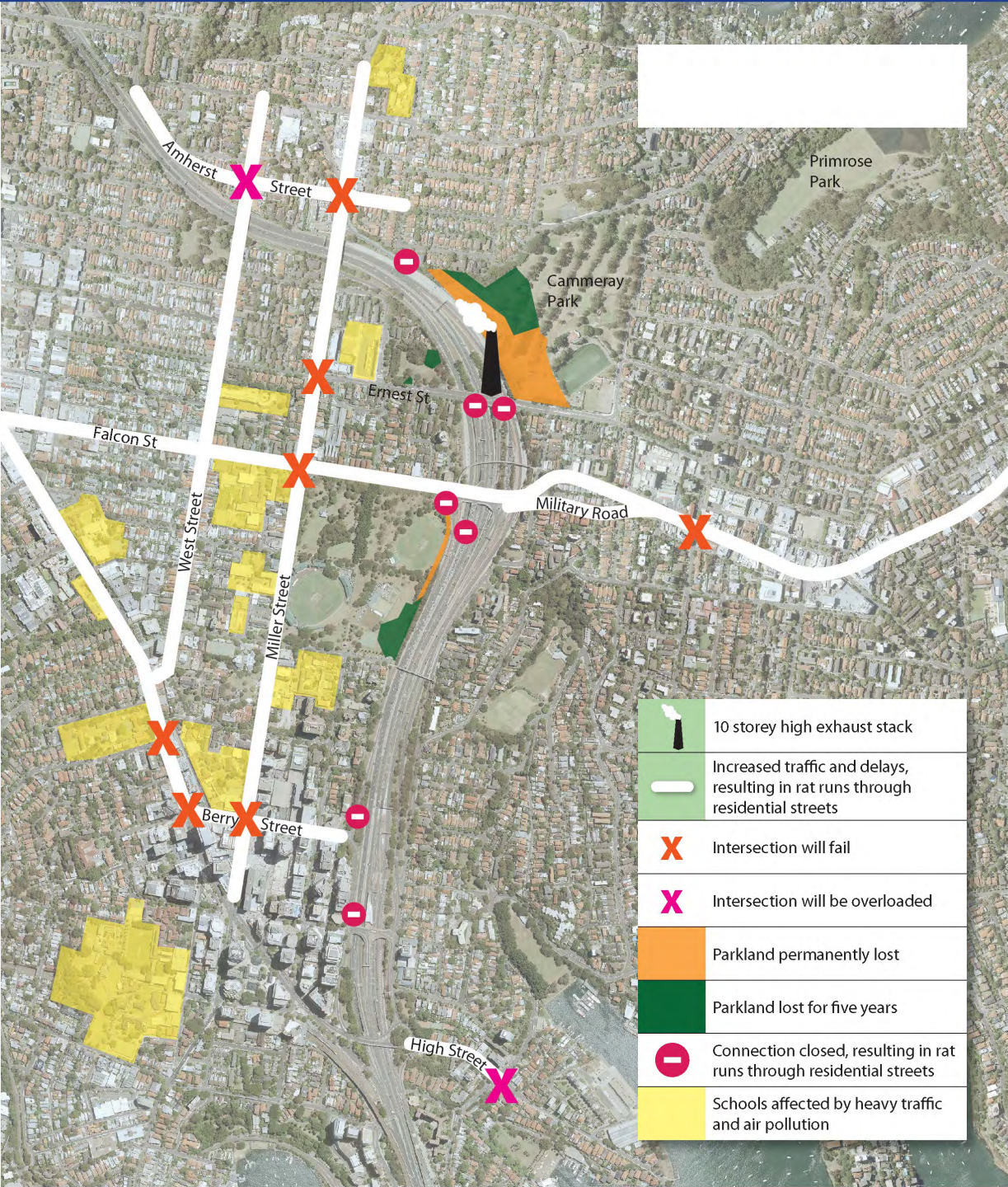
BEFORE - Rozelle Rail Yards (2007)



## AFTER “Rozelle Parklands”

- 10 Hectares of new parkland
- Includes ~1.3 hectares “cut & cover” over motorway





## DEGRADE LIVING ENVIRONMENT

- Funnel new traffic into NS CBD
- More traffic in villages
- Remove parkland
- Close motorway links (create rat-runs)
- Walking to school (10,000 children)
- Concentrate vehicle exhaust
- Disturb contaminated land
- Aboriginal Heritage

## TRAFFIC IMPACTS LOCAL ENVIRONMENT (PEOPLE)

### INTERSECTION

### EXTRA DELAY

Amherst Street/West Street	+80%
Amherst Street/Miller Street	+81%
Miller Street/Ernest Street	+76%
Military Road/Ben Boyd Rd	+327%
Falcon Street/Merlin Street	+46%
Berry Street/Walker Street	+66%

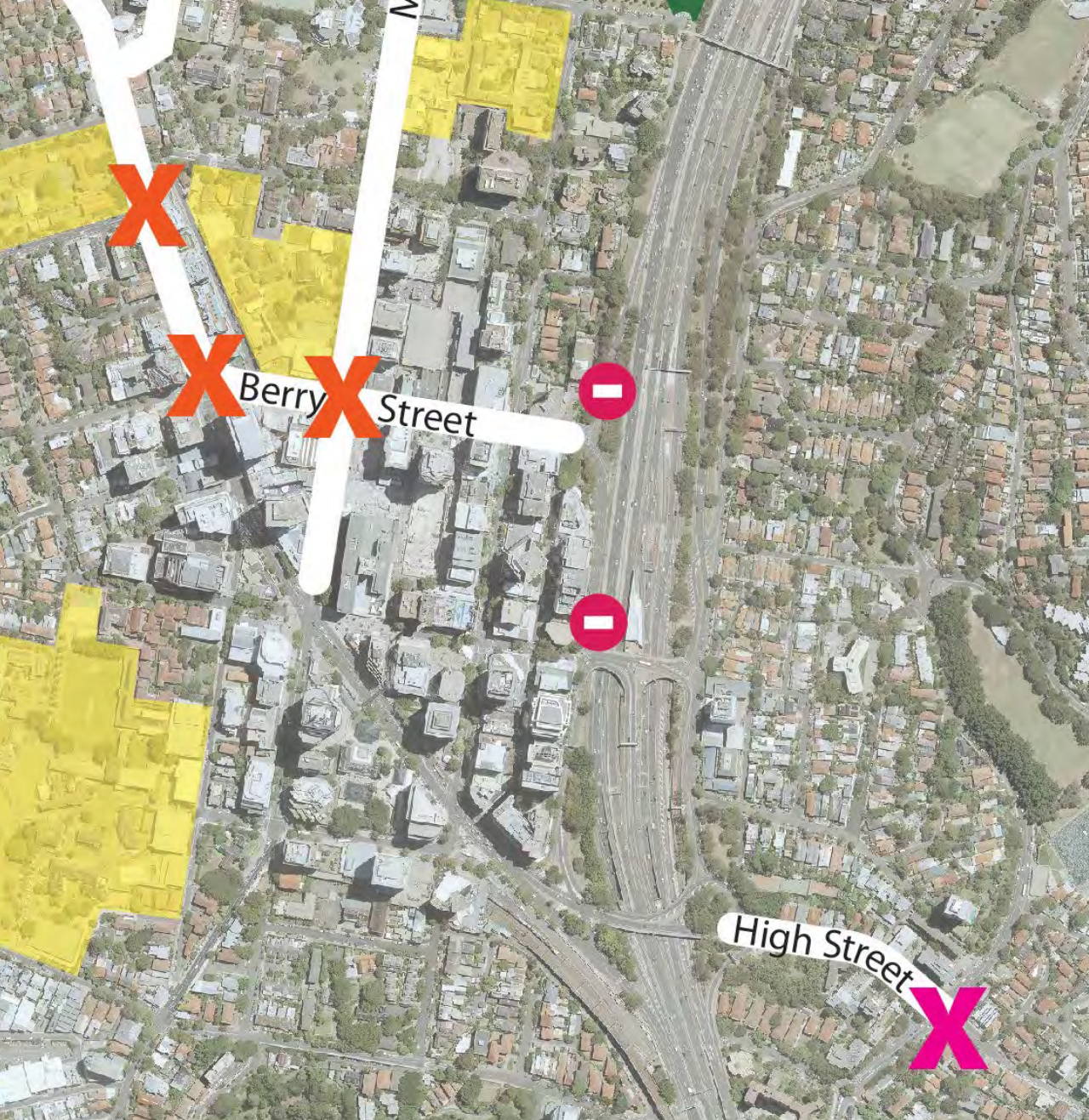
Data source: WHT&WFU EIS p. 9-23 to 24





*80% More traffic delay at West & Amhurst Streets – a major school walking route between Crows Nest and Cammeray*





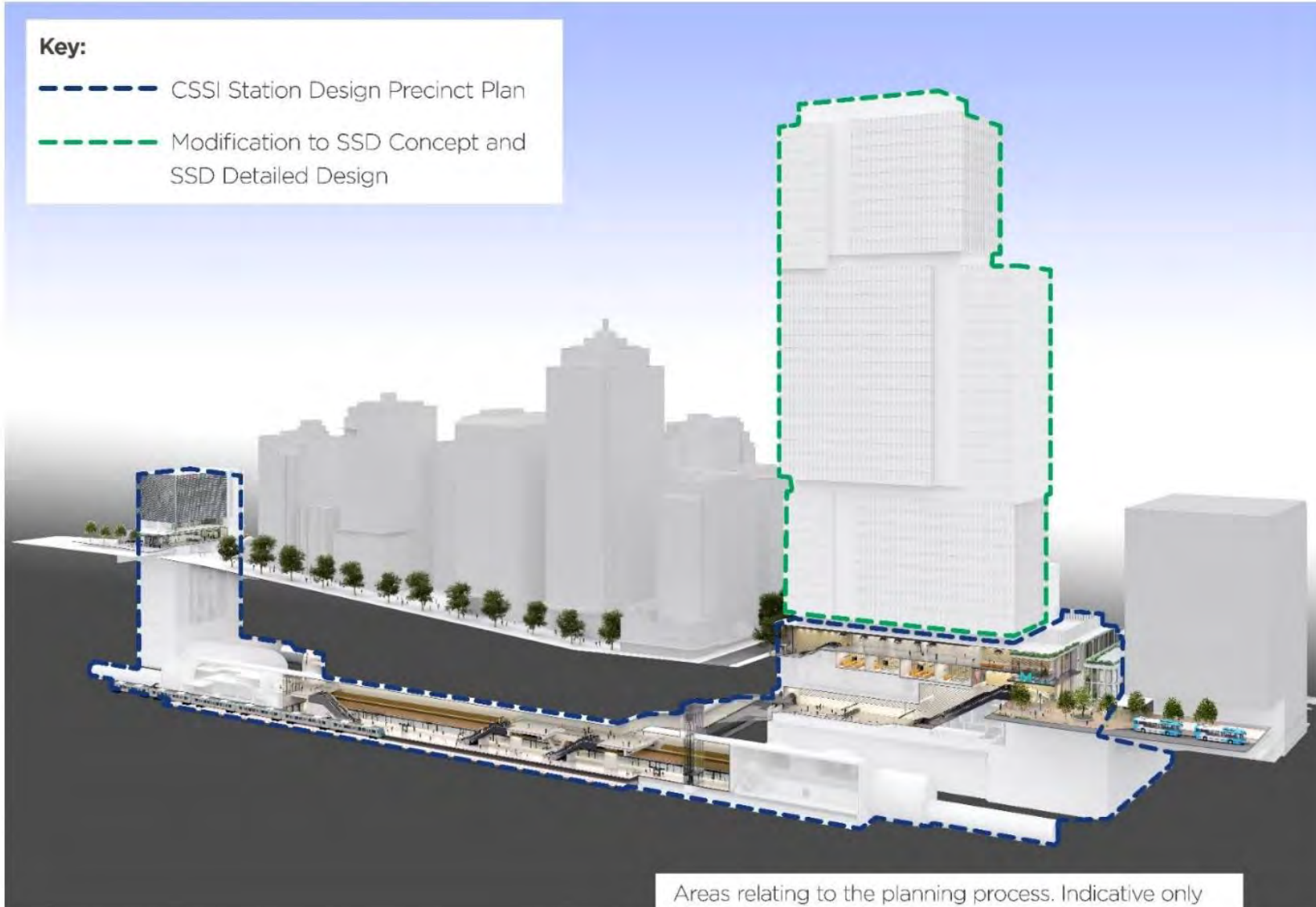
*Portal position attracts vehicles from a wide area*



*Increase Traffic in Berry Street at new Metro Station*



# NORTH SYDNEY CBD - VICTORIA CROSS STATION



Miller Street long-section showing Station Box & two entries

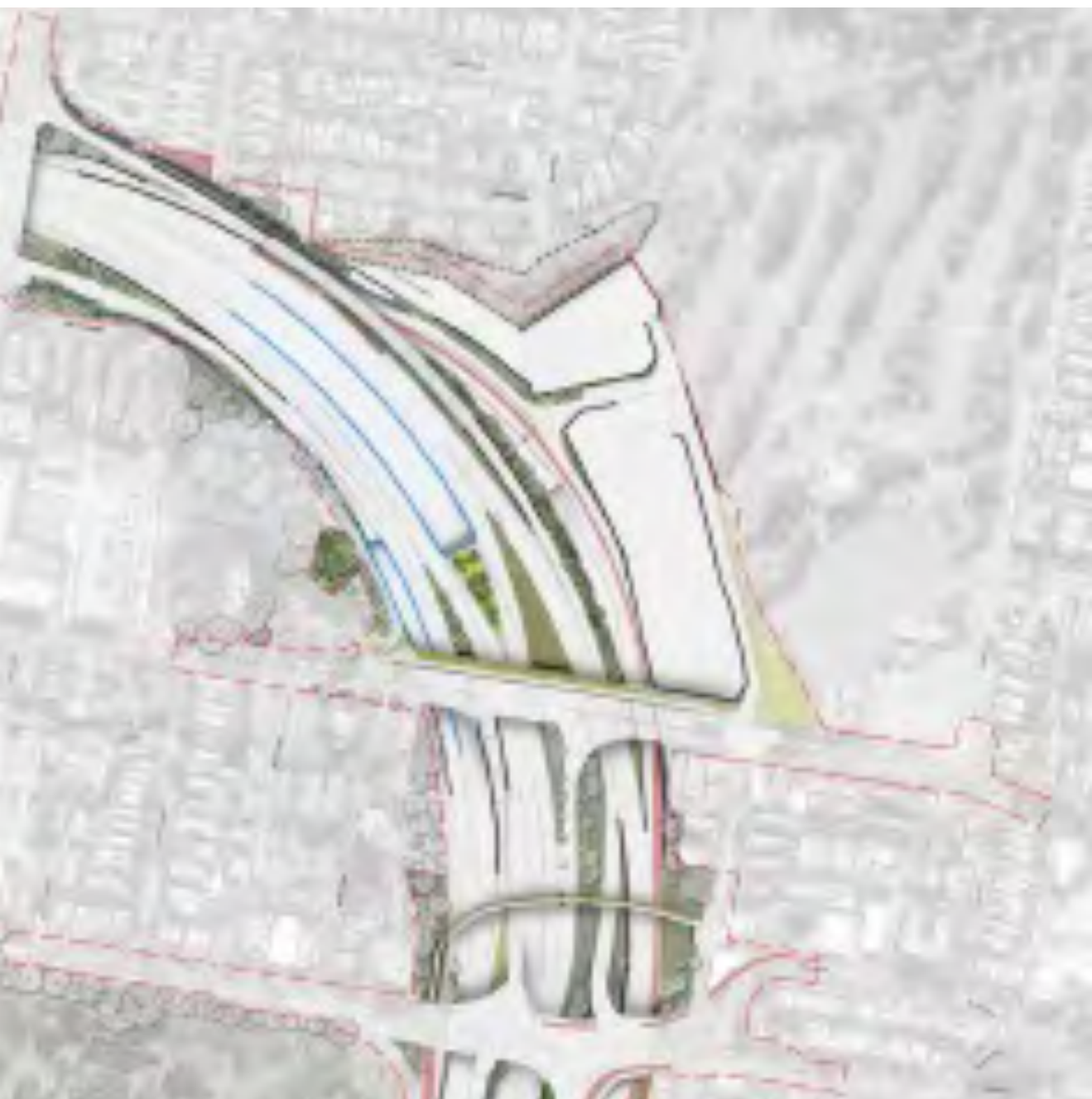
## Metro Station project:

- Major bus/rail interchange
- Public transport to transform CBD
- Dennison Street shared zone >10,000 pedestrians per hour

## Tunnels Motorway project:

- Increase Berry St traffic to four lanes
- No kiss-&-ride or delivery
- Push Traffic into Dension St
- Busses trapped by tunnel traffic





**TREES LOST OVER 3000**



New Exhaust Stack  
Height = 8 Stories

New Industrial Sheds replace Parkland  
Height = 4 stories  
Area = 3x soccer fields

Cammeray Park  
& Golf Course

Ernest Street

Marlin Street







Park Avenue

Cammeray Golf Course

ANZAC Park

Beaches Link southbound tunnel exit

Beaches Link motorway facilities

Western Harbour Tunnel motorway facilities at the Warringah Freeway

Western Harbour Tunnel mainline surface connection to/from the Warringah Freeway

Beaches Link northbound tunnel entry

Underground connection to Beaches Link mainline tunnels







# Open Space Provision Strategy

MAP 4  
Open Space Categories - Revised

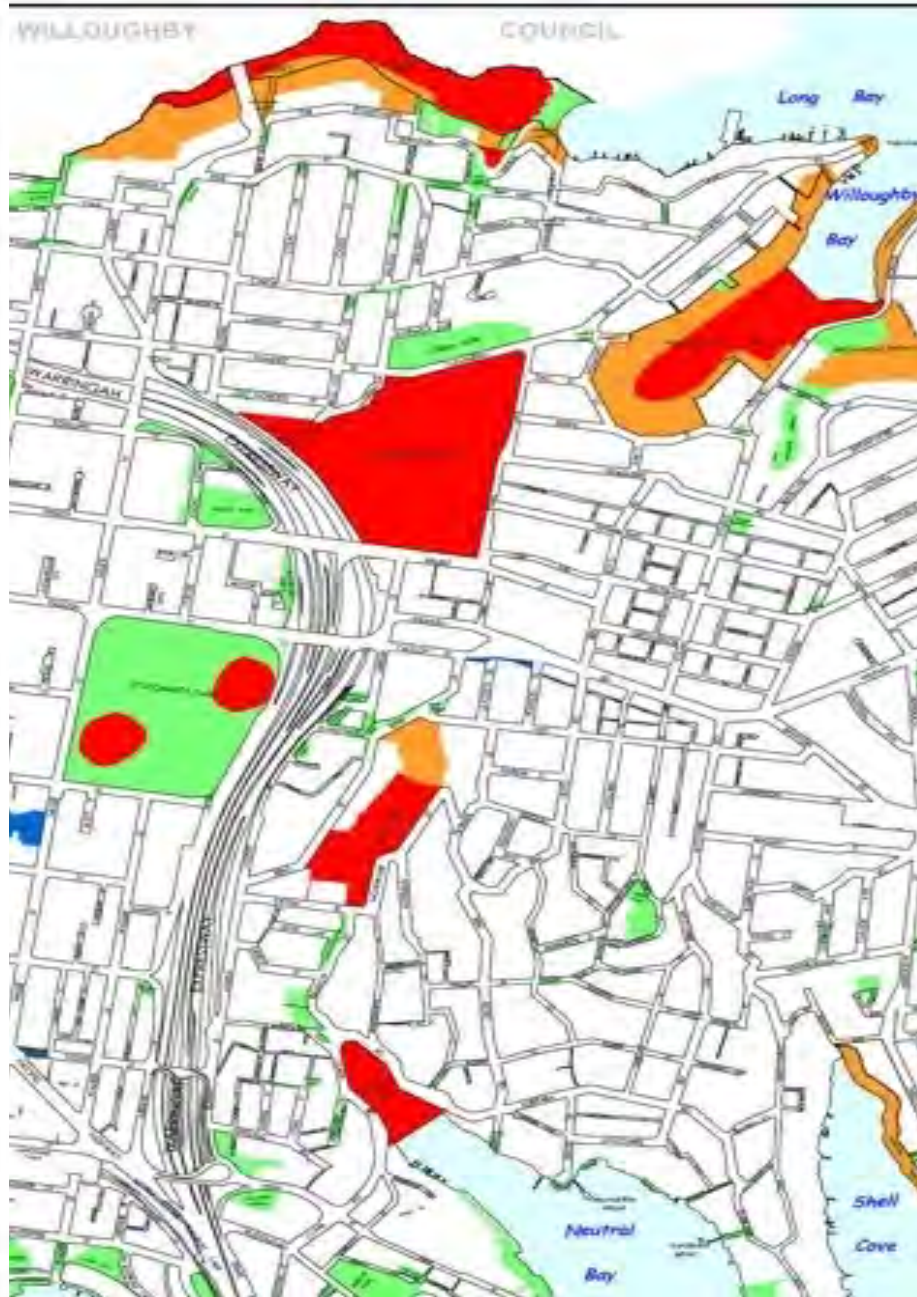
NOTE: Categories reflect the primary function of the park or reserve, as it relates to this strategy.

- Legend
- Park
  - Bushland
  - Sportsground
  - Civic Space
  - Local Government Boundary



Scale: 1:15000

Date of publication : 08/10/08



# 31%

31% of all of NSC Sportsground are inside the land leased to Cammeray Golf Club

	Gross Ha	Sports Ha	
Anderson Park	2.13	2.13	Crown
Forsyth Park	4.79	2.94	NSC
Primrose Park	11.41	6.54	Crown
St Leonards Park	14.50	6.57	Crown
Tunks Park	13.27	6.42	Crown
Waverton Park	4.04	0.94	Crown
Cammeray Park	15.35	15.35	Crown
	65.48	40.87	
Golf Club net		12.83	
% of total sports area		<b>31%</b>	

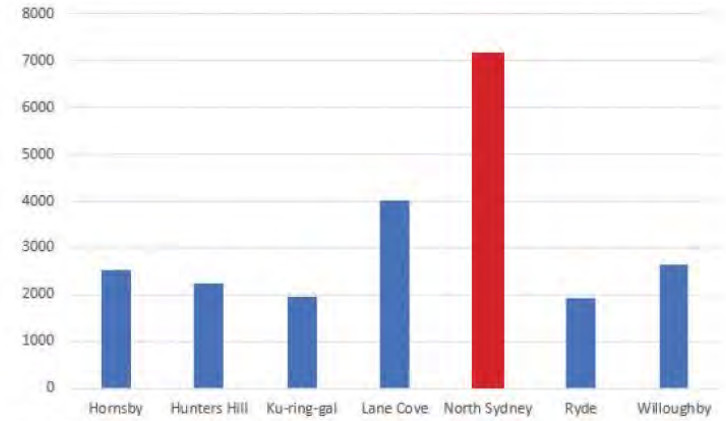


# NORTH SYDNEY NEEDS RECREATION SPACE

## POPULATION DENSITY

- North Sydney has highest population per hectare

**2x** average density

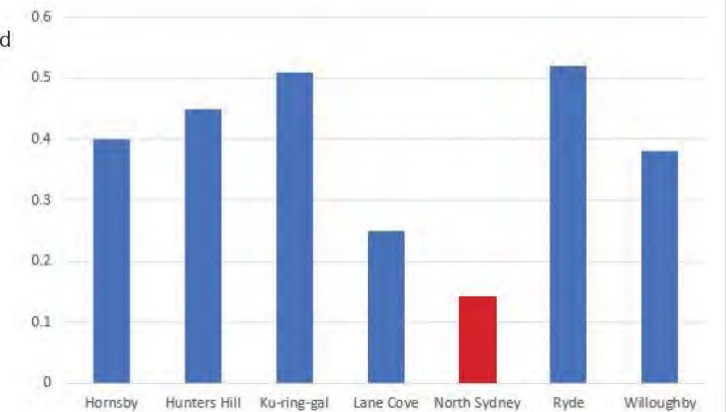


Source: Recreational Needs Study 2017

## RECREATION SPACE PER PERSON

- North Sydney has the lowest ratio as of sports and recreation space

**1/3** average space



Source: Recreational Needs Study 2017



# CAMMERAY PARK AND THE FREEWAY UPGRADE



Crown Land boundary



Existing Golf Course Lease  
Approx 12.5Ha  
Land value at least \$800M



Reconfigured ~8.2Ha Golf Course designed in secret, soon to commence construction, significant expenditure of public funds for essentially private benefit when lease from North Sydney Council expires in 2026- condition of consent E101 but no transparency or consultation with council or community; raises question of 'secret dealings' between Golf club and TfNSW- why?

~2.7 Ha residual apparently being designed with active sports field by TfNSW without any consultation with community or Councils

Golf Club House- direct lease from Crown Lands 3202sqm

North Sydney Council football field

Tennis Courts leased from NSC

Croquet club leased from NSC

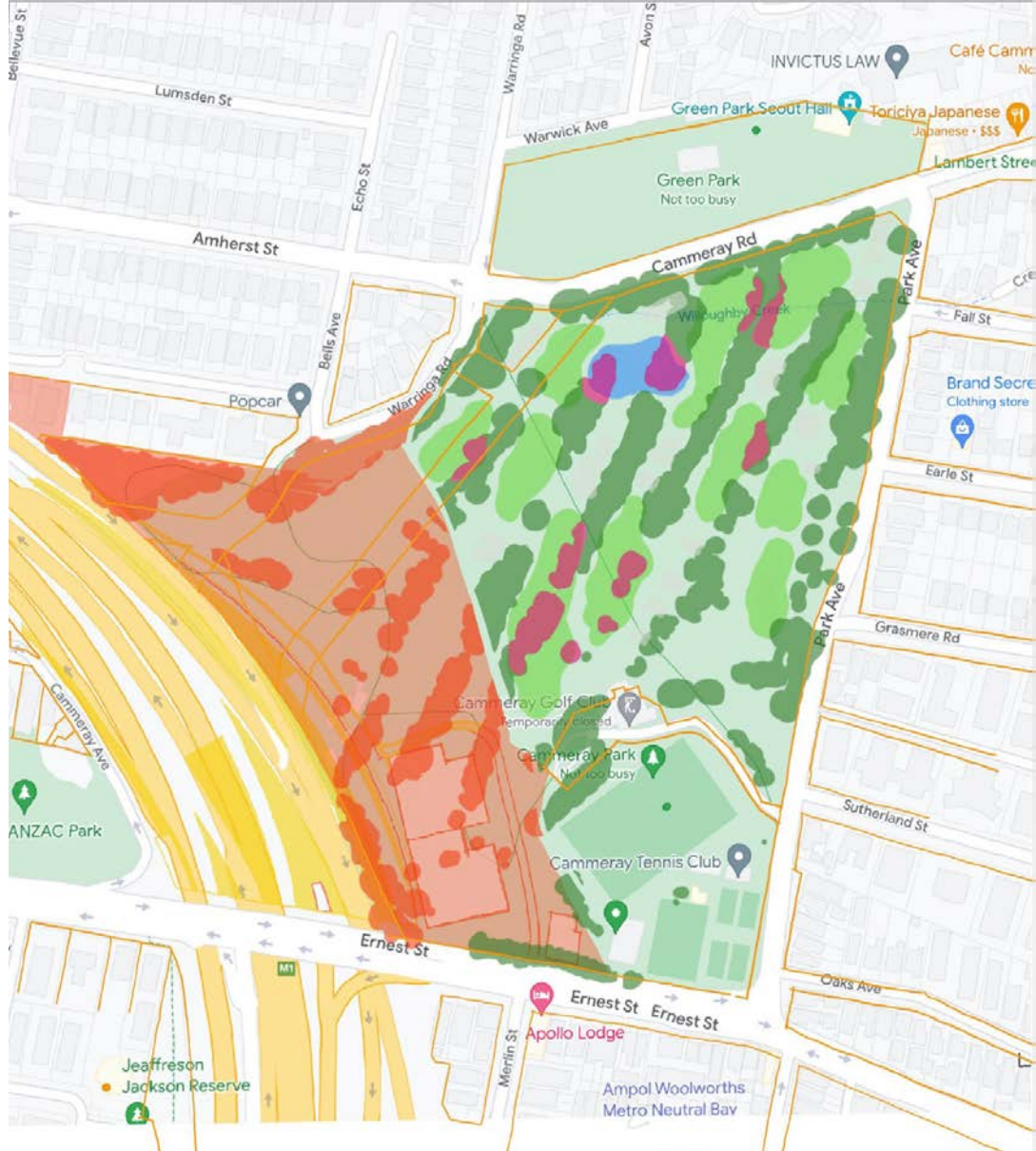


Land to be subdivided and compulsorily acquired for Motor way operations 1.5Ha



BEFORE





**IMPACT OF ROAD WORKS + GOLF CLUB ON CAMMERAY PARK.**

- TREES LOST GOLF COURSE
- TREES LOST CONSTRUCT
- RESUMED AREA
- FAIRWAYS
- EXIST TREES
- BOUNDARIES.



**BEFORE**



**AFTER**





Area Tool  
Area: 12.51 ha  
Perimeter: 1.942 km

1:2,257  
0 30 60m



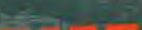




BEFORE





### PUBLIC WALKING TRACKS

-  Demolished for WFU
-  Built for WFU.
-  Missing from WFU





PARK AVENUE FOOTPATH



VS CAMMERAY PARK (GOLF COURSE)



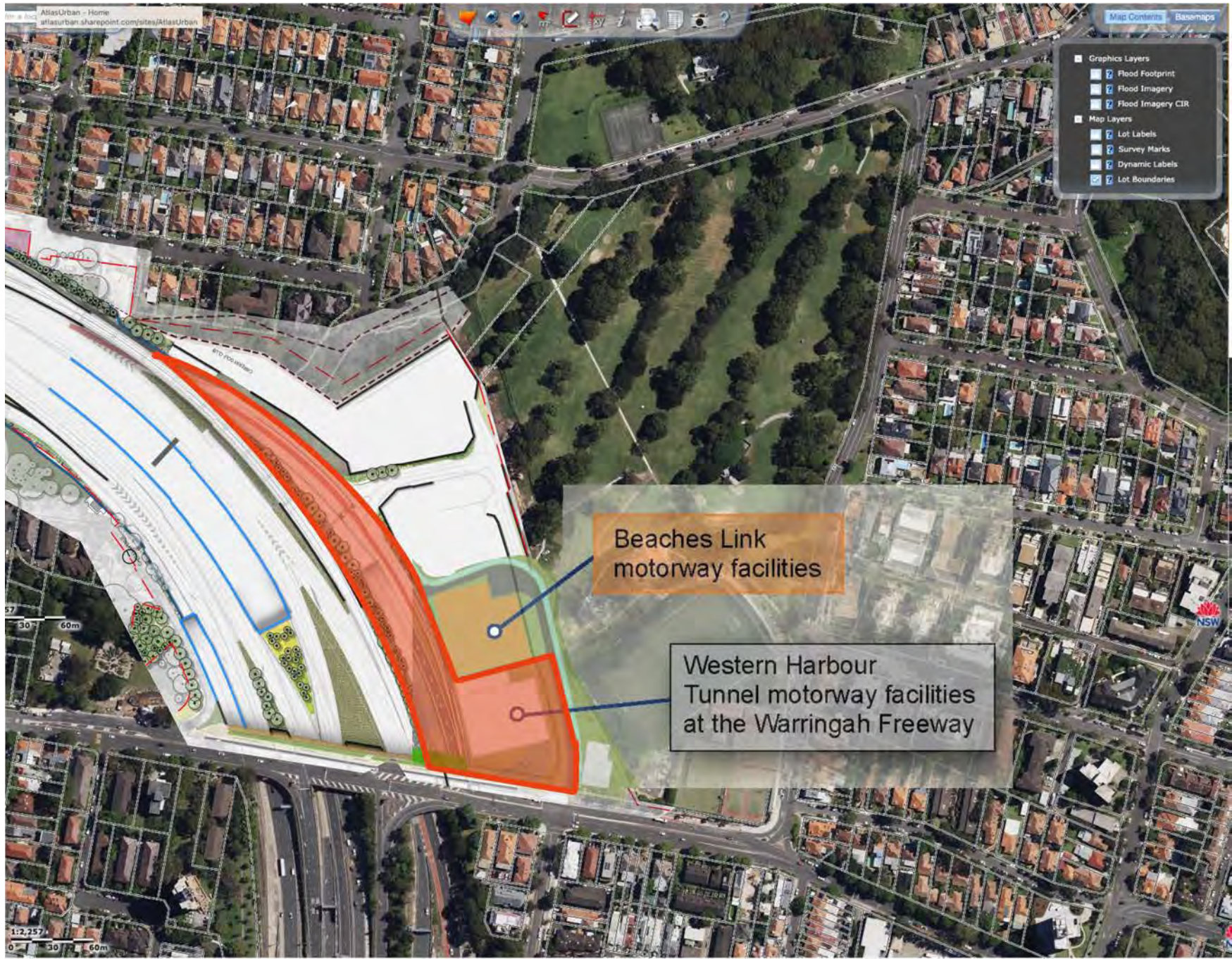


PARK AVENUE FOOTPATH



VS CAMMERAY PARK (GOLF COURSE)





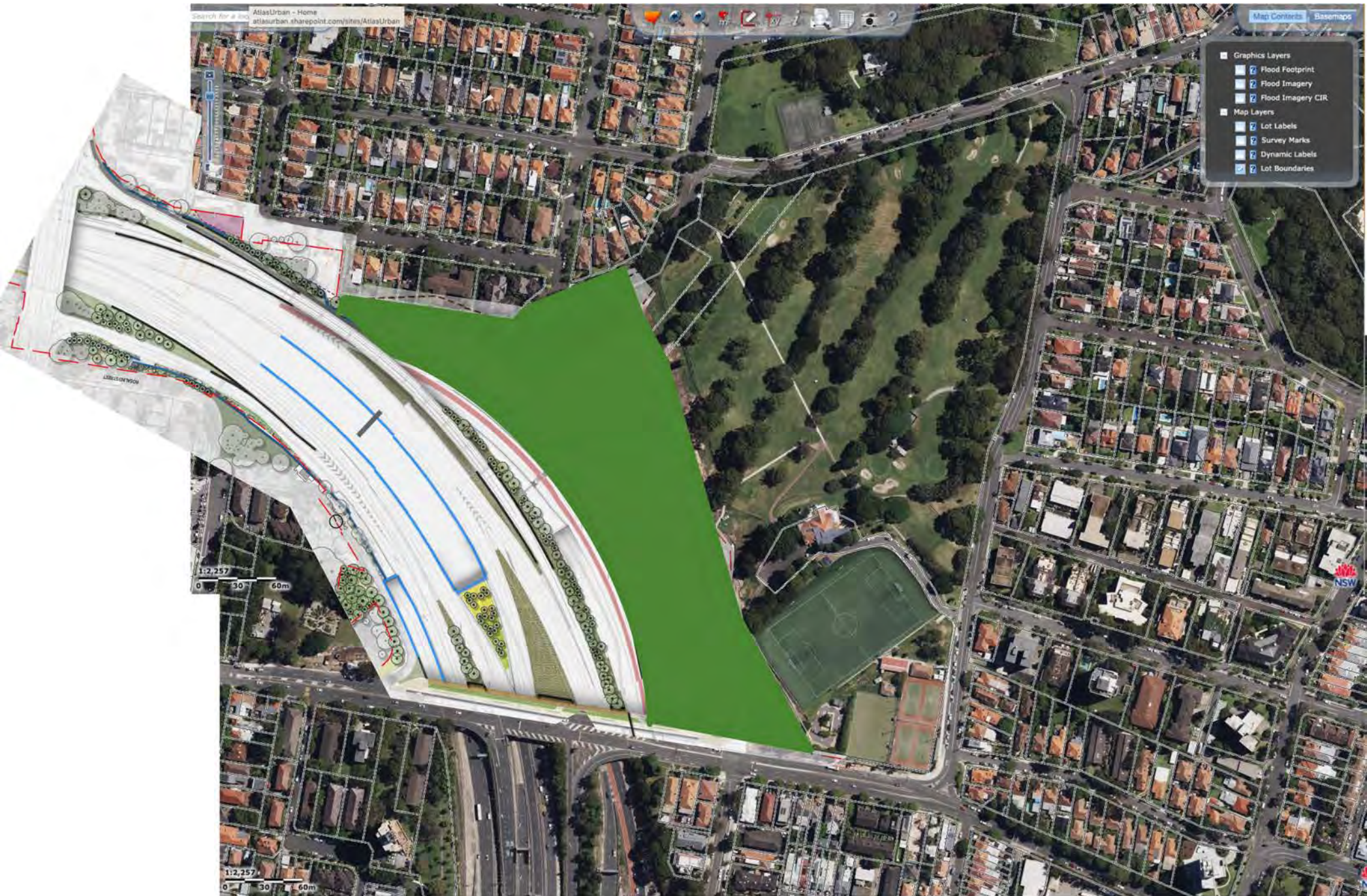
Beaches Link  
motorway facilities

Western Harbour  
Tunnel motorway facilities  
at the Warringah Freeway

- Graphics Layers
  - Flood Footprint
  - Flood Imagery
  - Flood Imagery CIR
- Map Layers
  - Lot Labels
  - Survey Marks
  - Dynamic Labels
  - Lot Boundaries







AtlasUrban - Home  
atlasurban.sharepoint.com/sites/AtlasUrban

Map Contents Basemaps

- Graphics Layers
  - Flood Footprint
  - Flood Imagery
  - Flood Imagery CIR
- Map Layers
  - Lot Labels
  - Survey Marks
  - Dynamic Labels
  - Lot Boundaries

1:2,257  
0 30 60m

1:2,257  
0 30 60m







## Public Investment \$20B?

- Opportunity cost
- Integrated evaluation
- Changing times
- Sustainability

Test should be:

- Improve villages & towns
- Connect parkland
- Improve local connections
- Support pedestrians
- Walking to school
- Reduce pollution
- Protect Aboriginal Heritage