

## LOCAL CHARITABLE ORGANISATIONS DOING GOOD BUT DOING IT TOUGH

*The COVID-19 pandemic's impact has been felt keenly here in Australia, as it has around the world. Economically it's been a tough two years, but the impact has been felt more broadly than pure economics, negatively affecting so many Australians in so many dimensions.*

Charities have played a critical role during the crisis, ranging from working with vulnerable communities that need support, to providing emergency relief for individuals who were not eligible for government support programs, to being the 'social glue' for many people during social distancing restrictions. Without a vibrant charity sector, many more people would have been left behind.

The January 2022 report, JB Were/ NAB Charitable Giving Index, shows the charitable sector has been significantly impacted by a fall in donations during the pandemic. The decrease in 2020 was 3% and in 2021, 4%. While it sounds modest, the loss in income to charities equates to almost \$1billion per year.

Despite that, charitable organisations continue their fantastic work. It's heartening to see the kind of support they provide right here in our own backyard. Naremburn hosts a wide variety of charities providing social services and other support to residents. A quick tally shows a dozen charitable organisations in Naremburn including:

Lifeline Shop – Lifeline's fifth and largest shop opened on Willoughby Road, Naremburn in the old Anderson's Hardware store in 2017. The store sells a vast selection of pre-loved clothing, books, toys, collectibles, homewares and more.



All items are donated by the community. The proceeds from the sale of these goods provides significant funding for Lifeline's support services, so every purchase helps someone in crisis. They are always looking for volunteers so if you are keen to apply visit their website at [lifeline2h.org.au/naremburn-shop](http://lifeline2h.org.au/naremburn-shop).

Our local churches, Naremburn Cammeray Anglican Church and St Leonards Catholic Church provide much-needed spiritual assistance as well as programs and services to help those in need. It has been challenging for them to hold masses in person due to the various lock downs, but they have quite admirably responded to the times and have been delivering masses online for parishioners and anyone in the community who desires spiritual guidance and a sense of (online) community. See [ncachurch.com](http://ncachurch.com) for the Anglican Church and [bbcatholic.org.au/lms](http://bbcatholic.org.au/lms) for the Catholic parish.

Catholic Care Naremburn Family Centre at 40 Merrenburn Avenue is a fantastic community resource and support service for people who need help with domestic violence, financial assistance, counselling and child and parenting programs, housing and accommodation, mental health support and more. See [catholiccaredbb.org.au](http://catholiccaredbb.org.au).

Starlight Children's Foundation has been in their Naremburn office in Chandos Street for many years and though not specifically responding to COVID issues,

### INSIDE THIS ISSUE

- Open-drain danger 3
- Amherst to Massey noise walls 4
- Talus Reserve ownership reverts to NSW Aboriginal Land Council 6
- Pfizer Vaccine for 5-11 year old children 8
- Urban Bushland Management Plan 9
- Willoughby's new Mayor and Naremburn Ward Councillors 11
- Art prize competition winner 12

for over 30 years they have focused on bringing fun, joy and laughter that helps sick kids be kids. See [starlight.org.au](http://starlight.org.au).

Juvenile Diabetes Research Foundation (JDRF) is leading the fight against Type 1 diabetes, searching for a cure to improve the lives of millions of Australians impacted by type 1 diabetes. They have been part of every breakthrough in diabetes care in the last 45 years. See [jdrf.org.au](http://jdrf.org.au). Both Starlight and JDRF are located at 80 Chandos Street Naremburn.

There are many more charities in Naremburn as well as in neighbouring Crows Nest, St Leonards and Chatswood. Charities rely on the generosity of Australian donors and volunteers now more than ever given their own funding has been impacted at the same time as the need for services has grown exponentially. So, let's get out and support them in any way we can for the good of our community.

**KATHERINE RASKOB**  
EDITOR

TRUE OR FALSE  
Forsyth Coffee House celebrates  
40 years in Naremburn.  
ANSWER ON PAGE 12

FOLLOW AND SHARE YOUR PHOTOS ON  
INSTAGRAM @ NAREMBURN

THANK YOU TO OUR SUPPORTERS - PLEASE SUPPORT YOUR LOCAL SHOPS

McGrath

infocus  
St Leonards

NAREMBURN  
PODIATRY

THE  
IVY  
LEAGUE

belle  
PROPERTY

NORTH SHORE  
Veterinary Hospital EST. 1935

ALLSOPP BUNTING  
INSURANCE

Forsyth

CORNUCOPIA  
BAKERY

The  
Urban  
Teahouse

True



## VICE PRESIDENT'S REPORT



I hope you were able to get out and about over the festive season even with the COVID challenges.

The last couple of years have highlighted to me the importance of our community. A "good community" can be best described as a:

*Cohesive, safe, confident, prosperous and happy place. It is free of poverty and crime, providing a high quality of life for everyone that lives there. It values and promotes an open participative development process.*

For a community to be truly successful, it relies on its members to be actively involved in the community. As the Vice President of the Naremburn Progress Association (NPA), I have seen firsthand how the efforts of the NPA has fostered a sense of community, where individuals and businesses can connect, share and grow.

The NPA is a not-for-profit, non-political, non-sectarian organization, made up of a group of volunteers who work for the benefit of the whole community. The NPA has been heavily involved in issues such as the Beaches link and combatting over-development in the area. As you are no doubt aware, Naremburn is a suburb with extensive growth and changes predicted over the next decade and beyond. To continue our work in promoting and

advancing the welfare of this area, including ensuring our amenities and environment best suit the Naremburn community, we need your help.

NPA currently has some 70 financial members. We are actively seeking new members to enable us to have a greater involvement in issues concerning our community and to give our community a greater voice in the way Naremburn will move forward into the future.

Active involvement in the NPA is always welcome, but if your current circumstances don't allow for much spare time, even the contribution of membership fees is of help. The NPA relies solely on membership fees and advertising to fund its activities.

To join as an individual costs \$5.00 with an annual fee of \$15.00 or \$10.00 for pensioners. You can join through the website: [www.naremburnprogress.org.au](http://www.naremburnprogress.org.au).

Businesses can also join as a Business Member with a fee of \$15.00 pa (tax-deductible). Joining as a business allows you to showcase your business on our Facebook site, website and advertise in the quarterly newsletter "Naremburn Matters."

All members can attend NPA meetings and have access to agenda papers and minutes through our website.

I strongly urge you to complete an Application for Membership form to join the NPA and assist in ensuring that Naremburn continues to grow and develop in a manner of benefit to its community members.

**HELENE KEMP**  
VICE PRESIDENT & TREASURER & CO-ORDINATOR OF NAREMBURN MATTERS

*(Apologies from the President: By-election commitments prevented the preparation of a President's Report)*

**NAREMBURN MATTERS**  
QUARTERLY NEWSLETTER OF  
THE NAREMBURN PROGRESS  
ASSOCIATION (NPA)



**Naremburn  
Progress  
Association**

Naremburn Progress Association  
Founded 1901, incorporated 2004  
PO Box 393 St Leonards 1590  
[www.naremburnprogress.org.au](http://www.naremburnprogress.org.au)

### Naremburn Matters

[naremburn.matters@naremburnprogress.org.au](mailto:naremburn.matters@naremburnprogress.org.au)

Editor: Katherine Raskob

Proofreaders: Kerry-Ann Aitken

Article Co-ordinator: Helene Kemp

Advertising Manager: Helene Kemp

Typesetting and Design: Deborah McLeod  
Double Up Productions Pty Ltd

Printing: On Time Printing

The opinions expressed in articles, letters and contributions published in Naremburn Matters do not necessarily reflect the opinions of the NPA or its officers. The opinions of the authors are their own.

While all possible care is taken to be accurate, no responsibility whatsoever will be taken by the NPA, Typesetters or Printers.

**President** Larissa Penn

[president@naremburnprogress.org.au](mailto:president@naremburnprogress.org.au)

**Vice Presidents** Helene Kemp

[vice.president@naremburnprogress.org.au](mailto:vice.president@naremburnprogress.org.au)

Roger Promnitz

[vice.president@naremburnprogress.org.au](mailto:vice.president@naremburnprogress.org.au)

**Secretary** Ralph Youie

[secretary@naremburnprogress.org.au](mailto:secretary@naremburnprogress.org.au)

**Treasurer** Helene Kemp

[treasurer@naremburnprogress.org.au](mailto:treasurer@naremburnprogress.org.au)

**Committee Members** Carmen Loecherer,  
Matthew Smythe, John Melville

### General Meetings

Second Thursday of February, April, June,  
August, October and December  
Commencing at 7:30 pm with an Open Forum  
Naremburn Community Centre  
7 Central St, Naremburn

Pre-registration may be required during  
COVID-19 please see [naremburnprogress.org.au](http://naremburnprogress.org.au) for more details



## JOIN THE NPA

### NAREMBURN PROGRESS ASSOCIATION

Become an active member of  
your Naremburn community  
and have your say

Join or renew your membership at  
[www.naremburnprogress.org.au/  
membership/join-renew/](http://www.naremburnprogress.org.au/membership/join-renew/)

Annual membership due 1 January

Fees \$15 (\$10 concession) plus  
\$5 joining / lapsed member

If you would like to volunteer to assist  
on the Committee, or could help prepare  
Naremburn Matters, please call Helene on  
0403 015 004



YOUR COMMUNITY VOICE

The Annual General Meeting  
of the NPA will be held on 7 April  
at 7.30pm at 7 Central Street  
Naremburn

Visit our new and  
improved website at  
[www.naremburnprogress.org.au](http://www.naremburnprogress.org.au)  
and let us know what you think

Our website has a wealth of information  
about Naremburn and government  
projects that affect our community.  
The "development submissions" page is  
updated regularly and contains links to  
relevant information on each project.



Serving Naremburn's best  
Coffee & Tea since 1981

284 Willoughby Road Naremburn

Monday to Sunday  
6.45am - 6.00pm

02 9437 5916



# SIGNS WARN OF OPEN-DRAIN DANGER

*Naremburn Ward's Willoughby City councillor Nic Wright has organised the erection of two warning signs beside a dangerous open-stormwater drain near houses in Waters Road, Naremburn.*

Responding to safety concerns raised by a local resident – a Naremburn Progress Association member – Councillor Wright recently inspected the site and immediately referred the issue to the council's Infrastructure and Design Managers, who provided the following advice:

*"Last financial year Willoughby Council reviewed the safety of stormwater inlets and systems across the Willoughby Local Government Area in response to a Coronial Inquiry arising from a tragic youth incident in NSW."*

*This review resulted in the establishment of a prioritised program of safety-related works for open stormwater systems, based on a risk ranking.*

*This financial year's program includes investigation and design for improved public safety measures along the open drain in Waters Road, Naremburn.*



*Sign near Waters Road*

*Community consultation and the construction of works are planned for next financial year, subject to available budgets."*

Councillor Wright said that he believed, in the interim, passers-by should be made more aware of the drain.

"I requested that the Council arrange for the installation of advisory signage warning of the dangers and risks of fast-flowing stormwater during intensive rain periods," he said.

"The Council since has installed two warning signs alongside the drain."

**BILL COLHOUN**  
**NAREMBURN RESIDENT**



*Cr Wright at Waters Road storm drain*

## OUR NEIGHBOURHOOD 'ONES TO WATCH' LIST

### Commenced

- Channel 9 Site (WLPP DA-2020/87)
- West St Development (NSC DA 21/20)
- Garland Rd Development (WC DA-2019/343)
- Warringah Freeway Early and Main Works (Go to DPIE Major Projects SSI\_8863, subscribe at <https://v2.communityanalytics.com.au/rms/whf> for updates)
- Christie St Multi-site Development (LCC DA6/2018) – in progress
- School Children Safe Wombat Crossing Program – Merrenburn Ave and Rohan St (WC Minutes 3/11/21). Merrenburn Ave completed; Rohan St yet to start

### Approved

- Crows Nest Over Station Development – Concept Approved (DPIE Major Projects SSD\_9579)
- Western Harbour Tunnel (Go to DPIE Major Projects SSI\_8863)
- Willoughby Leisure Centre Pool Rebuild (SNPP PPSSNH-198)
- Warringah Freeway Noise Walls Project (NSC google Noise Walls)
- Chandos St (DA2021-189) – 48 Chandos St (adaptive reuse). Approved by WLPP 20/1/22.
- Walter St and Willoughby Rd Integrated Development (WC DA-2021/300), now as Residential high density with 164 units – assessed by SNPP (PP-2020-535); approved 2/2/22.
- 2-14 Northcote Street, Naremburn Shop Top housing/ Roof Garden (WC DA-2013/147/F) – Determined and approved by SNPP (PPSSNH-250)
- Extension of Lighting Hours at Bicentennial Reserve (WC DA2007/581/A + new DA TBA)

### In Planning

- Beaches Link (Tunnel) and Gore Hill Freeway Project (Go to DPIE Major Projects SSI\_8862)
- Gore Hill Indoor Sports Centre (WC Minutes 8/3/21)
- 2-12 Chandos St (College of Law) (WC PP2020/3) – dormant?
- Sydney Water Duplication of Sewer Line in Bicentennial Reserve – early 2022. Potential large expansion of scope
- 43 Donnelly Rd (DA-2021/340) – St Leonards church area redevelopment; 12 townhouses, new private dwellings, adaptive reuse of Presbytery. Submissions closed; being assessed by Council
- Holtermann Street Park Crows Nest – design concepts. Submissions via yoursay.northsydney.nsw.gov.au close 28/2/22

### Plan and Strategy Reviews

- Naremburn Local Centre Streetscape Design (WC project 301983) – early 2022
- Consultation on changes to LEP and DCP – WC Minutes 14/12/2020 early 2022
- Urban Bushland Plan of Management on public exhibition until 6/3/22 – WC Minutes 3/11/21
- Crows Nest/ St Leonards 2036 Plan – Google "DPIE 2036"
- Willoughby Local Centres Strategy 2036 – Google "Naremburn 2036"



**ALLSOPP BUNTING**  
INSURANCE

*Navigating insurance doesn't need to be a maze.  
Talk to us today.*

Andrew Bunting 0411 611 988

[www.allsoppbunting.com.au](http://www.allsoppbunting.com.au)

## Amherst to Massey noise walls

It was a wild wintry night in 2010 when the Roads and Maritime Service (RMS) and North Sydney Council hosted an information session about the new 'Noise Abatement Program' (i.e., Noise Walls). But it wasn't until 2015 that we received details about the 2m high timber fence to replace the chain fence at the corner of Jenkins and Armstrong Street and a noise wall at the end of Massey Street. A community meeting was held where the concerns were raised and the JAM lobby group created.

Over the next six years, meetings have been held with RMS, the Minister for Transport's office and with now former Minister Berejiklian to continue to raise the communities' concerns at the lack of RMS engagement. The Mosman Daily even ran an article about it.

A wall was built at the end of Massey Street (below the freeway level) that exposed



more noise and visual pollution into the area and a short wall was built at the start of Amherst Street.

JAM is continuing to lobby for a noise wall on the freeway itself and raising concerns about the planned wall from Massey to Amherst Streets (which will again be lower than the freeway at points).

**MICHELE GENNOE**  
CAMMERAY RESIDENT



*Massey Street before wall (top right) and after wall (above)*



## NAREMBURN ACTION GROUP (NAG) UPDATE

The focus of NAG is on the interface of Naremburn with St. Leonards and as commercial buildings on Chandos Street are developed into shop-top apartments we are alert to development proposals on the north side of Chandos that abut the Naremburn Conservation Area (NCA). Henry Lane provides a break of 5 metres between new 5-6 storey apartment buildings and the cottages of the NCA.

The current development proposal for 48 Chandos Street is an attempt to build apartments within the envelope of the existing commercial building. This would create a wall of residences on Henry Lane overlooking the cottages. NCA residents have argued that this is unacceptable and the apartments must be set back in line with similar developments along Henry Lane, to protect their privacy.

**JULIE WADDINGTON**  
NAREMBURN ACTION GROUP (NAG)

## Ethical Investing

**Is Ethical Investing the way to make money and feel good at the same time?**

Over the past couple of years, we've seen a growing trend of clients wanting to know if their investments are making a positive impact in the world.

Ethical Investing is when you strategically invest in companies that have ethical practices. Typically, this is done through managed funds that tend to avoid involvement in areas such as weapons manufacture, alcohol, tobacco, gambling or fossil fuels.

Instead, the emphasis is on sectors like renewable energy, sustainable technologies or healthcare.

As with most investing, it does have potential downsides.

Limited investment options and often higher fees are two areas to consider, and not all ethically branded investments are equal – some do very little and claim to be "ethical".

However, if you would like to enjoy sustainable returns and live in alignment with your values, ethical investing is something you could seriously consider.

To find out more about ethical investing, please feel free to get in touch.

**JANE AND JIM**

**infocus**  
St Leonards

- PERSONAL WEALTH CREATION
- BETTER MORTGAGES
- RETIREMENT PLANNING

**Jane Ridder** BBus(FinPlan)  
DipFMBM  
**Financial Adviser**  
P 02 8203 4160  
M 0418 539 080  
E [Jane.Ridder@infocus.com.au](mailto:Jane.Ridder@infocus.com.au)  
W [infocus-stleonards.com.au](http://infocus-stleonards.com.au)



**Jim Leone** DipFMBM  
**Mortgage Broker**  
P 02 8203 4160  
M 0403842669  
E [james.leone@infocus.com.au](mailto:james.leone@infocus.com.au)  
W [infocus-stleonards.com.au](http://infocus-stleonards.com.au)



R1,11 Chandos Street, St Leonards NSW 2065  
PO Box 186, St Leonards NSW 1590

**Naremburn residents serving the local community**

\*This information is General Advice and does not take into account any person's particular financial objectives, situation or needs. You should consider whether it is appropriate to your circumstances.





## WILLOUGHBY NEIGHBOURHOOD WATCH



# WILLOUGHBY-LANE COVE SES TO THE RESCUE



The local unit of SES volunteers is based in Naremburn and this story and photo from January are a typical example of the fantastic work they do. Four hours of chain sawing by two crews of our volunteers were needed to remove a very large tree. The tree had fallen in the high winds and rain, across the driveway of an elderly resident who was reliant on the power to his house. The power lines had been brought down by the tree and his car was trapped inside his garage. The SES crew had a generator on board the truck which could have been utilised if they hadn't managed to get the tree cleared in time.

TRIPLE ZERO  
**000**  
FOR EMERGENCIES

POLICE ASSISTANCE LINE  
**131 444**  
TO REPORT OTHER CRIME

CRIME STOPPERS  
**1800 333 000**  
REPORT CRIMINAL INFORMATION

**CRIME STOPPERS**  
**1800 333 000**

**CONTACTING THE POLICE**  
IN NEW SOUTH WALES

1800 333 000  
[www.nsw.crimestoppers.com.au](http://www.nsw.crimestoppers.com.au)

### DID YOU KNOW?

The late Ted Mack, local interest and the last Independent for North Sydney lived in Dodds St Naremburn on his retirement. He was a frequent visitor to Forsyth and attended a number of our NPA events such as the 110th anniversary and our Naremburn Open days in the Centre. I once asked him to be a guest speaker but he dismissed it saying he was an "accidental" politician!

**KEVIN FITZPATRICK**  
RESIDENT

*Welcome to the first Naremburn Matters newsletter for 2022, and it's no exaggeration to say that Team Chauncy has really hit the ground running*



We sold a four-bedroom Californian bungalow at 20 Wheatleigh Street for \$4,640,000, 51 Dalleys Road Naremburn for \$2,900,000 and a renovated two-bedroom apartment at 81/336 West Street Naremburn for \$1,250,000. We also set a new suburb record for a semi in Willoughby with 50 Chiltern Road selling for \$3,500,000.

These great results come off the back of a super-busy 2021 that was like no other year we've seen before in terms of the property market. We sold 35 houses and

26 townhouses / apartments, set 11 new street records and 8 new block records – including the rare and truly unique 'Quarry Master's Cottage' selling for \$5,000,000, plus a stunning four-bedroom Federation home that sold off-market for \$5,380,000. In fact, we sold 17 properties off-market, including a modern four-bedroom family home at 22 Station Street Naremburn that sold just before Christmas for \$4,350,000.

We predict that property values will remain steady in 2022. Interest rates look likely to possibly increase this

year or early next. We envisage continued buyer demand until there is a rate increase. It is still a great time to capitalise on the favourable conditions.

If you'd like a confidential chat to better understand the current market, we'd love the opportunity to speak with you.

**PETER CHAUNCY**  
**MCGRATH ESTATE AGENTS**

**MOBILE 0402 036 489**

**DIRECT (+61 2) 8115 0401**

**FACSIMILE (+61 2) 8115 0499**

**[www.mcgrath.com.au](http://www.mcgrath.com.au)**

# Talus Reserve ownership transfers to NSW Aboriginal Land Council

*Willoughby City Council welcomes the momentous decision to transfer land ownership of Talus Street Reserve, Naremburn to the NSW Aboriginal Land Council under the Aboriginal Lands Rights Act.*



The decision by former Minister for Planning and Public Spaces, Rob Stokes MP, transfers land ownership of Talus Reserve, including the tennis facilities, from the Crown to the Metropolitan Land Council, where it will be transferred over the coming months to the Land Council. This process is expected to take six to 12 months.

Willoughby City Council managed and maintained the Reserve as the Crown Reserve Manager, and this role will cease with the transfer to the Land Council.

Public access to bush tracks and stormwater management remains unchanged by the decision. The land grant excluded small areas of land deemed necessary for essential public purpose – including public walkways, road access and stormwater drainage – which will remain accessible for Council to manage for public purpose, either as Crown Land or as an easement, granted by the Land Council.

Mayor of Willoughby, Cr Tanya Taylor, expressed the Council's resounding support, "We respect and support the NSW Government's decision to grant the

claim made by the Land Council as the owners and custodians of this beautiful land. Willoughby Council is committed to working collaboratively and positively with the Land Council to ensure a smooth transition," Mayor Cr Taylor said.

"On behalf of the community, Council acknowledges the rich indigenous history of the Gammeraygal people in the area. The transfer will embed this significant indigenous heritage, drive cultural and social outcomes as it affirms Aboriginal Land Rights and supports reconciliation," added Mayor Cr Taylor.

Talus Street Reserve, at the headwater of Flat Rock Creek, features bushland, walking tracks, picnic tables, eight tennis courts, a clubhouse and parking area.

The existing arrangements between Council and the Northern Suburbs Tennis Association remain in place and the courts will continue to be available for use until the transition is completed.

<https://www.miragenews.com/talus-reserve-ownership-transfers-to-nsw-706331/>

## LETTER TO THE EDITOR

Following on from the December newsletter's sustainability articles, residents may be interested to know that Willoughby Council has partnered with RecycleSmart to provide residents with an easy way to recycle a vast array of items. A pickup is booked with RecycleSmart, recyclable items left outside your front door and RecycleSmart pick up the items, taking them to recycling centers and drop off locations in the area. You can choose to subscribe for free for a two-bag pick up each month or pay \$2 a bag for a one-off pick up or for extra bags. I found it a very easy option.

**KERRY-ANN AITKEN**  
NAREMBURN RESIDENT

## BICENTENNIAL RESERVE CONTAMINATION UPDATE FROM WILLOUGHBY COUNCIL

As you may be aware, the land currently known as Bicentennial Reserve was previously used as a landfill site up until the 1980s. During investigations for the proposed Beaches Link and Harbour Tunnel projects, concerns were raised about the potential for ongoing contamination arising from this historic use.

Council self-reported these contamination concerns to the NSW Environment Protection Agency (EPA), and commissioned Consulting Earth Scientists (CES) to undertake an Environmental Site Investigation Report (the Report) to determine the extent of any contamination.

Council has now received the Report, provided it to the EPA, and is making the Report publicly available on Council's website. Council has also prepared some FAQs, which will be updated as further information becomes available.

Based on the findings of the Report, there is no immediate health risk to residents or users of the reserve, however there were some minor exceedances in ground and surface waters which may require further investigations and monitoring.

Council is meeting with the EPA next week and will inform residents of next steps once they are resolved.

The Report is the first step in a process to identify and manage contamination, and Council is committed to transparency on this matter, and will keep the community informed of any progress.

**DEBRA JUST**  
CEO WILLOUGHBY CITY COUNCIL

*Editor's note – Residents are encouraged to review the Report and its finding for themselves regarding contamination concerns.*



# Chocolate Shards

## EASY EASTER TREAT

SERVES 10

### INGREDIENTS

400g dark or milk chocolate

100g white chocolate

Mixture of Easter treats e.g., small chocolate eggs

### METHOD

- Line an A4-sized baking tray with baking paper.
- Break the dark or milk chocolate into a large bowl.
- Melt the chocolate by placing the bowl over a saucepan of water that is at a slow simmer, ensuring bowl doesn't touch the water.
- Melt chocolate over the low heat – stirring as it begins to melt.



- Pour melted chocolate onto baking paper, spreading into an even, thin layer using a palette knife.
- Melt white chocolate using the same method.
- Dot blobs of white chocolate on top of the dark/milk chocolate and use a skewer to swirl them together.
- Decorate the top with treats such as small Easter eggs or leave as is.
- Place into fridge and once it has hardened, break into shards.

**KERRY-ANN AITKEN**  
RESIDENT

If you have a recipe you would like to share send it to

[naremburn.matters@naremburnprogress.org.au](mailto:naremburn.matters@naremburnprogress.org.au)



**Thai Takeaway**

**Tuesday to Saturday**

**Lunch 11.30 - 2.00**

**Monday to Sunday**

**Dinner 4.00 - 9.30**

Phone your order - Ready in 20 minutes

**9906 1088**

294 Willoughby Road Naremburn

**belle** PROPERTY

## Belle Property's David Benjafield talks market conditions and the ideal time to sell

**The back end of the 2021 property market finished strongly despite the uncertainty around the emerging Omicron Covid variant.**

Our team had a solid finish to the year, selling 63 Northcote Street, Naremburn off-market for \$3.5m, setting a new street record in the process. It's interesting to note that this was a four-bedroom, three-bathroom house with no parking set on just 278sqm, making the result all the more impressive.

We enjoyed an equally strong start to 2022, selling 7 Martin Street, Naremburn, a three-bedroom semi on 177sqm, in just five days for \$2.4m. The median house price in Naremburn currently stands at \$3.0375m, up 21% on the previous year, with the median for apartments at \$1.306m, up 24% over the year.

If you've been contemplating selling, we believe it would be prudent to capitalise on the market over the next few months. With the Federal election looming



mid-year and rhetoric that rates may rise towards the end of the year, there's a very good chance that the first quarter of 2022 is likely to be the strongest, with the lead-up to Easter shaping up to be the prime time to list.

Kind regards,

**DAVID BENJAFIELD**  
BELLE PROPERTY  
0422 560 652

[david.benjafield@belleproperty.com](mailto:david.benjafield@belleproperty.com)

## NAREMBURN COMMUNITY GARDENS

### *Four ways to make the most out of your pram walk*

#### 1. BRING HOME NUTRITIOUS, ORGANIC PRODUCE

Recently we have had an abundance of cherry tomatoes, Cape gooseberries, strawberries, corn, basil and parsley.

#### 2. BOOST YOUR ENDORPHINS

Walking with your baby boosts your mental health. Have some fun pointing out all the things the garden has to offer



such as the many flower varieties, lizards, blue banded bees and more to be seen. Look out for the new fairy garden popping up soon for older children.

#### 3. REDUCE HOUSEHOLD WASTE

Drop your organic waste into the community compost, reducing methane and assisting the garden to thrive.

#### 4. GATHER NEW READING MATERIAL

Pick up a new book for yourself or to read with your baby from our street library.

The Naremburn Community Garden is conveniently located at the end of Bongalong Street close to Naremburn shops. Working bees are on Sundays from 9am-11am where you can chat to the locals or join in working in the garden. Although all are welcome at any time.

**JESSE HARRISON**  
NAREMBURN RESIDENT



*Local Jesse Harrison with her four-month-old daughter Jude at Naremburn Community Garden*



## CORNUCOPIA BAKERY

Cafe 🌿 Take-Away 🌿 Catering

- Pastries – sweet & savoury
- Pies – meat & vege options
- Sourdough bread
- Fruit loaf & bagels
- Salads & sandwiches
- Gluten-free options
- Easy take-home dinners, family-sized pies
- Coffee supplied by Ona
- All pastries, pies & bread baked fresh on the premises
- Catering – for all occasions & offices

**Like us on Facebook:**

<https://www.facebook.com/cornucopiaBakerySydney>

**Follow us on Instagram:** @cornucopia\_bakery

**to hear about our specials**



**Open from 6am  
7 days a week**

Shop 2/296-298  
Willoughby Road  
Naremburn

Ph: 0421 374 684



## HAVE YOUR SAY

# URBAN BUSHLAND MANAGEMENT PLAN

*Willoughby Council has extended the consultation of the Urban Bushland Plan of Management to 6 March 2022 given the challenging start to the year.*

Council is seeking community feedback on the Plan which is reviewed every five years while keeping the objectives and actions consistent. The changes to the Plan under consultation include incorporating legislative changes and new Council policies, updates with new information including changing community attitudes to managing urban bushland and more.

While there is little time left to have your say, your input to Council's plans for our local bushland is so important given how much of our local amenity is made up of urban bushland.

The Federation of Willoughby Progress Associations, the peak body for the seven Willoughby Progress Associations, is following this closely and will also make a submission.

Go to [www.haveyoursaywilloughby.com.au/urbanbushlandpom](http://www.haveyoursaywilloughby.com.au/urbanbushlandpom) or search Urban Bushland Plan on the Council website. Naremburn residents can provide a written submission or use the survey tool on the site to provide comments which will be included in the publicly available report.

*"Imagine if trees gave off WIFI signals. We'd plant so many we'd probably need to save the planet. Too bad they only produce oxygen we need to breathe."*

Australian  
Conservation  
Foundation



**'Where afternoon tea is brought down to earth in an urban village setting'**



Scones are baked daily, cakes are homemade, specialty coffee and tea leaves, and a menu that is deliberately simple but served with immense pride.

Monday closed  
Tue to Fri (8am–5pm)  
Sat & Sun (8am–4pm)

292 Willoughby Road  
Naremburn NSW 2065  
+61 406 480 964

<http://theurbanteahouse.com.au>



Photos by Katherine Raskob, Editor



## PFIZER VACCINE FOR 5-11 YEAR OLD CHILDREN

*I hope everyone had a lovely Christmas and New Year.*

After a break, it is now back to work, booster vaccinations, and reopening of schools. The Paediatric Pfizer vaccine will be the highlight of this article.

Since January 2022, approximately 2.3 million Australian children (aged 5-11y) have become eligible for the COVID-19 vaccination.

Due to the recent spread of infection, many parents have questioned the optimum gap required to arrange a first dose of the vaccine if their child

has recovered from a recent COVID-19 infection. Others have enquired if children need vaccination after recovery from the COVID-19 infection.

The Australian Advisory Group on Immunisation (ATAGI) recommends vaccinating a child after complete recovery from COVID-19 and symptom-free. ATAGI does not specify the exact time duration from the recovery of infection to receiving the first dose of the vaccine. Currently, the vaccination is scheduled, in 2 doses, given 8 weeks apart at a smaller dose than the vaccine received by people 12 years and over.

Although we know natural protection (immunity) after COVID-19 infection during the initial pandemic was demonstrated to be six months, the level of protection from the current Omicron strain is undetermined.

### BENEFITS AND SAFETY OF THE VACCINE

Current clinical trials have demonstrated that the benefits of the vaccine far outweigh the risks, and the vaccine is safe with minimal side effects for the 5-11 year old children.

Although the COVID-19 infection is very mild in most children, rarely some children can become extremely unwell. In the United States, COVID-19 infection is very rarely known to cause a multisystem condition called multisystem inflammatory syndrome in children (MIS-C).



Clinical trials have shown that the vaccine prevented COVID-19 infection and its complications, and the 5-11 year old children who received 2 doses of the vaccine were 91% less likely to get sick than the ones who did not receive the vaccine.

Protection against COVID-19 starts from 2-3 weeks after the first dose which is short-lasting. Two doses provide improved protection.

Nevertheless, each child needs assessment on a case-by-case basis and speaking with a health professional/GP is preferred to clarify any vaccine-related uncertainties. Please watch out for updated guidelines from ATAGI.

### Further information:

<https://www.health.gov.au/sites/default/files/documents/2021/12/covid-19-vaccination-information-and-consent-form-for-parents-and-guardians-of-children-aged-5-to-11-years.pdf>

**DR LALANA KAPUWATTE**  
WILLOUGHBY MEDICAL PRACTICE

**THE IVY LEAGUE**

MONDAY - FRIDAY  
7.30am - 5.30pm

SATURDAY  
7.30am - 3pm

SHOP NUMBER  
9439 2949

EMAIL  
[info@theivyleague.com.au](mailto:info@theivyleague.com.au)

WEBSITE  
[www.theivyleague.com.au](http://www.theivyleague.com.au)

1/284a Willoughby Rd, Naremburn

**Do you or a family member require podiatry services but are no longer able to safely travel to a clinic?**

At Naremburn Podiatry we offer home visit services across the lower North Shore area. Our home visit services include all facets of podiatry you would receive when attending our clinic location - from general treatments, diabetic foot care, biomechanical assessments, footwear assessment and fitting, plus much more.

If you're interested in a home visit appointment, give our wonderful reception staff a call to book in an appointment with one of our skilled Podiatrists

**ANDREW MURPHY**  
NAREMBURN PODIATRY

**WE TREAT:**  
Lower Back Pain  
Knee Pain  
Foot Pain

**NAREMBURN PODIATRY**

ORTHOTICS Designed, Made & Fitted Here

**276 Willoughby Road, Naremburn 2065**

We care for your

- Corns & Calluses
- Heel and Knee Pain
- Ingrown and Fungal Toenails
- Diabetic Foot Care
- Footwear Store
- Nail Surgery

**PODIATRY**  
We Specialise in Children's Feet

Health fund, DVA & Medicare rebate available

**ONLINE BOOKING**  
[www.naremburnpodiatry.com.au](http://www.naremburnpodiatry.com.au)

**8964 6648**



# WELCOME TO WILLOUGHBY'S NEW MAYOR – TANYA TAYLOR

*I am incredibly humbled and honoured to be elected as Mayor of Willoughby City. I thank the community for its support and for trusting me to serve you as Mayor.*

I'm excited to start work with the new team of councillors and deliver Willoughby's vision. Congratulations must go to Councillor Brendan Zhu, elected as Deputy Mayor at Council's first meeting on 31 January.

As a Willoughby resident for more than 20 years, I love many things about our wonderful community. We are so lucky to live in such a diverse, vibrant and liveable city with our bushland, parklands and waterways, our vibrant village centres, and the Chatswood CBD.

I appreciate our strong community spirit. The way we have come together throughout the pandemic has been remarkable.

It's wonderful so many of our residents have been getting vaccinated and boosted, and businesses continue to operate in a Covid-safe way. We are working hard to continue to deliver services and projects for the community. Like many



organisations, we have been affected by this current strain of COVID-19. As a result, there may be some delays. We appreciate your understanding and patience during these times.

The upcoming new Willoughby Local Environmental Plan (LEP) will be on exhibition in coming months and all residents are invited to explore and learn more at [haveyoursaywilloughby.com.au](http://haveyoursaywilloughby.com.au)

I look forward to seeing you out and about in the community soon.

If you wish to discuss any Council issues, please email me at [Tanya.Taylor@Willoughby.nsw.gov.au](mailto:Tanya.Taylor@Willoughby.nsw.gov.au)

**MAYOR TANYA TAYLOR**  
**WILLOUGHBY CITY COUNCIL**

## Introducing our NAREMBURN WARD COUNCILLORS

### NIC WRIGHT

**Nic's priorities this term will include:**

- Naremburn Village upgrade
- Development masterplan for Naremburn to stop overdevelopment
- Advocating against the destruction of Flat Rock from Beaches Link
- Improving streetscapes; more cleaning, flowers & trees

E: [nic.wright@willoughby.nsw.gov.au](mailto:nic.wright@willoughby.nsw.gov.au)  
M +61 481 033 442



### GEORGIE ROUSSAC

**Georgie's priorities this term will include:**

- Working with the Naremburn community to develop a vision to shape our future direction
- Delivering projects to enhance the local centre
- Advocating against inappropriate development including at Royal North Shore Hospital & the Tunnels

E: [Georgie.Roussac@Willoughby.nsw.gov.au](mailto:Georgie.Roussac@Willoughby.nsw.gov.au)  
M: +61 459 879 379

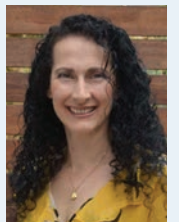


### ANNA GRECO


**Anna's priorities this term will include:**

- Understanding the impact of Covid on our community & facilitating business & social recovery
- Progressing the revitalising of the Naremburn Village
- Ensuring our built and natural heritage is protected
- Supporting community activism against the Tunnels project

E: [Anna.Greco@Willoughby.nsw.gov.au](mailto:Anna.Greco@Willoughby.nsw.gov.au)  
M: +61 459 866 064



**They would be pleased to hear from you on these issues and any other issues important to you.**



**NORTH SHORE**  
Veterinary Hospital EST. 1935


### North Shore Vet welcomes a pet MRI

North Shore Veterinary Hospital received their new MRI device last Friday 24th January 2022. A crowd gathered on Punch Street in Artarmon to watch the construction crew lift the machine in through the roof of the hospital.

The MRI is a long-awaited addition to the hospital's services they can provide to local pet owners. The service is expected to open in March. In the past, pet owners have had to travel long distances to other specialist hospitals for this service.

With the MRI, the veterinarians can have a closer and clearer look at the brain, spine, soft tissue and other organs of their pet patients and it offers a more accurate diagnostic tool. Along with the MRI device comes a team of radiographers and imaging specialists to operate the machine and interpret the studies.

Please speak with us if you have any questions. Our team of veterinarians and clinical staff would love to chat. We remain open 24/7 and operate under the current NSW Health guidelines. As always, we are open 24/7, to care for your pets.



Telephone: 9436 1213  
Open 24/7 @ 57-63 Herbert Street, Artarmon  
Undercover parking and lift access off Punch Street

## Community activities

Due to COVID-19 please use contact details below for current availability.

### Naremburn Community Centre Activities

9967 2917

[willpark@willoughby.nsw.gov.au](mailto:willpark@willoughby.nsw.gov.au)

Contact the Centre, for room hire availability.

### Naremburn Progress Association

Larissa Penn

[president@naremburnprogress.org.au](mailto:president@naremburnprogress.org.au)

2nd Thursday bimonthly 7.30pm  
February, April, June, August,  
October and December

### Playgroup

(for children 5 years of age and under)

[naremburnplaygroup@gmail.com](mailto:naremburnplaygroup@gmail.com)  
Wednesday 9.30am - 11.30am

### Northern Suburbs Philatelic Society

9419 7354 (Paul Storm)

### Breastfeeding Association

[abamns.contact@gmail.com](mailto:abamns.contact@gmail.com)  
1st Tuesday 10.00am - 12noon

### Willoughby Community Pre-school

9437 4260  
Monday to Friday 8.00am - 4.00pm

### Naremburn Library

7 Central St | 9439 5584

### Next issue, 1 June 2022

Naremburn Matters is a quarterly publication issued in March, June, September and December

Next issue deadlines:

Advertising: Friday 6 May

Articles: Friday 6 May

[naremburn.matters@naremburnprogress.org.au](mailto:naremburn.matters@naremburnprogress.org.au)

### Next NPA meetings

Details for the next NPA meeting available on the NPA website

[naremburnprogress.org.au](http://naremburnprogress.org.au)

Naremburn Community Centre

7 Central Street

All members and residents are welcome

### Letters to the Editor and articles

Articles, comments or suggestions email:

[naremburn.matters@naremburnprogress.org.au](mailto:naremburn.matters@naremburnprogress.org.au)

We do not publish anonymous letters.

Please include your email address or phone number as we may need to edit items to fit the space available.

## Art prize competition winner

In December, Willoughby City Council held the prize giving for their third annual art competition and exhibition, celebrating International Day of People Disability, for people experiencing social isolation or at risk of marginalisation. The Connect, Collaborate, Celebrate Art Competition and Exhibition 2021 aimed to provide artists in the area an opportunity to showcase their creative talent and promote themselves and their artwork.

The 2021 winner, awarded at a morning tea in December with a \$500 prize and an opportunity for a solo artwork exhibition at the Dougherty Community Centre, was Oliver Fontany for his acrylic and marker on canvas, titled *Accomplished Oli*. Oliver Fontany is a multi-disciplinary, neurodiverse artist. (Instagram @oliveryfontany).

Check out the Willoughby Council website for other art events including those at the Incinerator Art Space in Willoughby, Art Space on The Concourse in Chatswood and community art events including Kantha Stitching Workshop for beginners – a workshop to upcycle old fabrics and create beautiful unique items using an Indian style of mending – held 9 March at the Chatswood Library. For more information, head to the Community Arts section of the Willoughby Council website.



Used with permission. Oliver Fontany, *Accomplished Oli*, 2021, acrylic and marker on canvas. Winner of Connect, Collaborate, Celebrate

Have an interesting story to tell, useful information for the community, a recipe to share, an impressive or even funny photo – we'd love to hear from you! Send in your contributions to [naremburn.matters@naremburnprogress.org.au](mailto:naremburn.matters@naremburnprogress.org.au)

(No anonymous contributions – please provide your name and contact details as we may need to edit your contribution).

## Library News

### NAREMBURN LIBRARY TEMPORARILY CLOSED

Due to unforeseen staff shortages, Naremburn Library is currently closed. We are working hard to reopen as soon as possible.

Members and visitors should check the Library website for all updates. We thank you for your understanding and apologise for any inconvenience.

Naremburn Library services update:

- Printing, photocopying and scanning services are temporarily unavailable.

- After hours returns chute is open.
- Items returned after hours will not be removed from your account until the branch library's next opening day, please contact staff on 9777 7900 if you have any questions.
- Branch libraries are unable to take any payments at this time. Cashless payments are accepted at Chatswood Library only.

Chatswood, Artarmon, Northbridge & West Chatswood libraries are open!

TRUE: On one occasion Rob Forsyth invited celebrities and polities to step behind the espresso coffee machines to raise money for CanTeen, benefiting young people with cancer.



Remember to follow us and tag @Naremburn on Instagram to share glimpses of your life in Naremburn :)