

Naremburn Matters



September 2016 Vol. 13 No. 3

Circ. 3,000

Channel 9 Update

LEPC9 Pty Ltd, the owners of the Channel 9 property have now submitted their Environmental Statement (ES) to the Department of Planning (DoP) and it is now on public exhibition on the DoP website and at Willoughby Council Offices. Despite strong feedback from the community that the new plan is too high and too dense LEPC have ignored this and their ES continues to show twelve storeys maximum height and 510 apartments.

Artarmon, Naremburn and Willoughby South Progress Associations (PAs) and the Willoughby Area Action Group (WAAG), while approving the general redesign of the site, are all unanimous in opposing LEPC's proposal to increase the maximum building height from eight to twelve storeys and the number of apartments from 400 to 510. This was made clear to the DoP in a meeting with the PAs and WAAG in late July.

On Tuesday 16th August a Community Protest Meeting was held in the Uniting Church Hall in Clanwillian Street, Willoughby to update the community and pass a resolution protesting the development application. It was wonderful to see such a strong representation from the community, around 180, who remains united in it's fight against this proposal.

The meeting was addressed by Peter Conroy, Willoughby City Council's Director of Planning and Infrastructure, took us through the history of the proposed development outlining the changes in the plan from that handed down by the Land and Environment Court. The Hon. Gladys Berejiklian, our local member, and Councillor, Michelle Sloane addressed the meeting on behalf of Mayor Gail Giles-Gidney all of whom reiterated their support of the community.

Step Croft, President of the Federation of Willoughby Progress Associations spoke of the importance of our progress associations before submitting a resolution which was carried unanimously.

The meeting notes: The approved maximum building storey height and apartment numbers on the Channel 9 site were set after extensive community consultation, assessment and review by the Land & Environment Court and Planning Assessment Commission. Nothing has changed regarding the site that warrants any increase in the approved building storey height and apartment numbers.

The meeting resolves: Its opposition to the proposed or any increase in the building storey height and apartment numbers on the Channel 9 site above the 8 storey and 400 apartment limits that were set by the Land & Environment Court and Planning Assessment Commission.

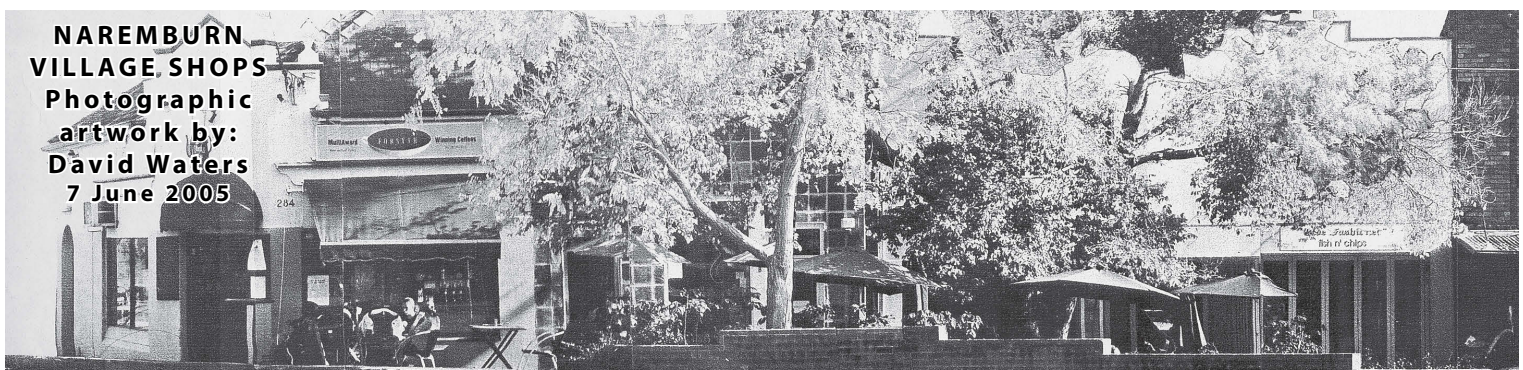
The very strong message of the evening was that every concerned member of the community writes to the DoP identifying his or her concerns and objections – the more the better! Information can be found on the DoP's website www.planning.nsw.gov.au.

It is important that we as a community remain vigilant and, through the NPA and the Federation of Willoughby Progress Associations (FWPA), articulate our concerns at every possible opportunity.

Viviane Leveaux
President

QUARTERLY NEWSLETTER OF THE
NAREMBURN PROGRESS ASSOCIATION (NPA)

NAREMBURN
VILLAGE SHOPS
Photographic
artwork by:
David Waters
7 June 2005





NAREMBURN MATTERS

Naremburn Progress Association

Founded 1901
Incorporated 2004.
ABN 93 907 169 376

PO Box 393
St Leonards 1590

www.naremburnprogress.org.au

President

Viviane Leveaux: 0431 777 547

Vice President

Helene Kemp 0403 015 004

Secretary

Roger Promnitz: 0419 227 986

Treasurer

Carmen Loecherer: 0409 766 470

Committee Members

Ralph Youie, Joann Morand, Frances O'Brien

General Meetings

Second Thursday of February, April, June, August, October and December
Naremburn Community Centre
7 Central Street.
Commencing at 7:30 pm with an Open Forum.

Naremburn Matters

Editorial Staff

naremburn.matters@naremburnprogress.org.au

Typesetting & Design

Forest Design www.forestdesign.com.au

The opinions expressed in articles, letters and contributions published in Naremburn Matters do not necessarily reflect the opinions of the Naremburn Progress Association or its officers. While all possible care is taken to be accurate, no responsibility whatsoever will be taken by the Naremburn Progress Association, Typesetters or Printers.

President – out and about

Since the last edition of Naremburn Matters much has been going on in our community. I was fortunate enough to have had a wonderful, long and, in my opinion well, deserved holiday overseas visiting Russia and the Baltic States. It does mean however that it has taken a bit of time for me to catch up with all the Naremburn goings on. I missed the heavy June rains which I'm told you all managed very well. Having researched a bit about Naremburn a few years ago know that we have had some monumental floods in our history destroying and washing away houses and bridges such as the 1953 and 1986 floods. It is pleasing to know that our improved buildings, roads and bridges weathered this storm better!

The issue of Chanel 9 continues and is far from resolved with Willoughby Area Action Group (WAAG) keeping up the fight. St Leonards Central may appear dormant but do not be fooled. Much is going on behind the scenes with a Department of Planning review underway. The Naremburn Action Group (NAG) monitoring developments who will keep us informed. The outcome of Council Amalgamations will also have an impact there.

Having unsuccessfully battled the building of a childcare centre in Donnelly Rd over a ten year period there is now a proposal for 220 place childcare centre on the corner of Willoughby Rd and Walter Street. This will have enormous impact on our suburb if it goes ahead, particularly in relation to traffic flow.

Naremburn Matters remains a large vehicle of communication with you but needs your help. If you have a titbit of interesting, useful or even useless information, share it with us – write to the Editor at naremburn.matters@naremburnprogress.org.au. The cost of publication and managing the association, eg compulsory insurance, is largely covered by advertising so if you run a business think of advertising with us. By so doing you also support your local community.

Viviane Leveaux

President

Naremburn Library News

Check your emails at Naremburn Library – now you can access your emails from the public access computer, as well as do catalogue searches and database searches.

Naremburn has plenty of great DVDs for loan, and now you can take out even more – the loan limit has increased from 8 to 16!

Are you curious about Twitter but don't know how to start? You could book into a tutorial session through Chatswood Library's Learn@ the Library program. Other topics include "Starting Facebook" and "Introduction to Family History". You can arrange an appointment through the Willoughby City Library website (www.willoughby.nsw.gov.au/Library/community-learning).

The "Tech Savvy Seniors" program might be just the thing to help you with using iPad's, smart phones and tablets so please keep an eye out for these practical sessions by going to www.willoughby.nsw.gov.au/Library and then clicking on "Tech Savvy Seniors" to make an online booking.

School holidays are coming up, so please check the website for school holiday activities in Willoughby City Libraries. You can take advantage of the new even more generous loan limits to borrow great books and DVDs from Naremburn Library for the whole family's holiday entertainment.

Happy Reading.

Diana Revington

Branch Librarian

Next Issue:

December 2016

Naremburn Matters is a quarterly publication issued in March, June, September and December.

December issue deadlines

Ad Booking: Friday 4th November
Ad Artwork: Friday 11th November
Articles: Friday 11th November

naremburn.matters@naremburnprogress.org.au

NPA Meeting Dates

Second Thursday every second month
7:30 pm

13th October

Guest Speaker

Jane Caro

Social commentator, writer and lecturer

Naremburn Community Centre

7 Central Street

Letters to the Editor & Articles

Articles, comments or suggestions should be addressed to:

The Editor,

naremburn.matters@naremburnprogress.org.au

or mail to:

PO Box 393

St Leonards NSW 1590

We do not publish anonymous letters.
Please include your email address or phone number as we may need to edit items to fit the space available.

Greater Sydney Commission - What is it?

Most of you will have heard of the Greater Sydney Commission (GSC) by now, but do you understand what its objectives and responsibilities are? Are you aware, regardless of the outcomes of local Council amalgamation attempts and in many cases court actions to resist such plans, regardless of whether your local Council remains in its present form, is merged with others, or is replaced by an Administrator, that the significant land use planning decisions going forward will be made by the GSC? This group does not have a short or even medium term planning horizon – they are tasked with providing a 20 year plan, with a 40-year outlook.

So who are they, and how is GSC structured? The leadership team is made up of:

- Chief Commissioner, Lucy Turnbull AO (wife of the PM)
- An Economic Commissioner
- An Environment Commissioner
- A Social Commissioner
- Six District Commissioners (our local Commissioner is Sydney North District Commissioner Dr Deborah Dearing)
- 3 ex-officio members (Secretaries from DoPE, TfNSW and NSW Treasury)
- Secretaries of the Ministry of Health and Department of Education.

Even with this firepower, the GSC has been given a very tight timeframe to produce 20 year plans for each of the Districts by November, now only a little over 2 months away. During the intervening period the GSC team are seeking to engage with the Community and have given the commitment to listen to the community's wishes for their Districts then reflect those wishes in the Plans. This sounds like a very laudable objective but it will not be easy, as most Government Planning groups have not recently generated much in the way of public confidence so despite the good intentions of the GSC they are facing a significant "trust deficit", which will need to be overcome before the District Plans are set. GSC representatives have begun meeting with various community groups in an endeavour to acquaint themselves with some of the history of a number of development approvals which were passed by the relevant authorities (local Council, JRPP, PAC, L&E Court etc) despite vehement opposition by the public. Sadly, they will have plenty of material to work with! Nonetheless we should be open-minded in raising issues with GSC representatives, and hope they really will try to reflect community wishes in each of the District Plans.

It should be noted here that the GSC has the necessary regulatory power to override local Council planning instruments such as Local Environmental Plans, Development Control Plans and even Conservation Areas. They can also change Council zonings if they see fit – and we have already seen them exercising this power. Members of the public may not be aware that the Planning body responsible for changing the zoning to facilitate approval of the Woolworths development in Smith St, East Chatswood was none other than the Greater Sydney Commission!

Roger Promnitz
NPA Secretary



Peter Chauncy at McGrath Crows Nest

It's hard to believe the spring season is here and we can put the winter blues behind us. Traditionally, the colder months see a slowing down of the market but our office has been posting some amazing results. In fact, over the past 90 days we have sold 13 properties in Naremburn, so any theories of winter being a slow season can be well and truly put to rest. It was not just a matter of quantity, the prices we achieved for our vendors have been nothing short of record-breaking.

In July, a new suburb record was set with the sale of 10 Rhodes Avenue Naremburn for \$3,420,000. In the same month we set a new suburb record for a semi attached residence when 60 Northcote Street went prior to auction for \$2,080,000.

We've also had a lot of success selling properties off the market, sourcing buyers from our extensive database before any advertising or marketing dollars have been spent. Using this method, we sold 22 Plunkett Street Naremburn for \$2,550,000. Renovators and fixer-uppers are also in the market looking to buy original homes and put their personal stamp or add value to them. We sold a totally unrenovated property at 28 Mitchell Street for \$1,900,000 prior to auction.

The property market in Naremburn is hot, and all indications show that it is likely to get even hotter. There are more buyers looking to purchase in the area than there are properties for sale. This is great news for homeowners who are thinking about selling and want to take advantage of this window of opportunity and strike while the iron is hot.

Feel free to contact us anytime or stop by for a chat to find out how your property is worth more right now than ever before.

**For the best real estate advice contact Peter Chauncy on
0402 036 489**

**McGrath
1A/29 Holtermann Street
CROWS NEST
02 8115 0401**

Helping the Preschool

The men from the Willoughby Community Men's Shed have been busy making items for local preschools and day care centres. Recently they presented the Willoughby Community Preschool with two battleships and steering wheels.

Not all the men have their own projects and the Shed looks to make items for local community groups. The preschool was approached to see if the men from the Shed could make some toys and play equipment.

A well-loved battleship had been decommissioned and the men set about making a replacement. It was just as easy to make two. The boys thought they were pretty cool.

The steering wheels are very popular at the Devonshire St Childcare so the men at the WCMS decided to make some for other groups.

The Willoughby Community Men's Shed will have a stall at the Willoughby City Council Street Fair on Saturday 3 September where they will showcase some of their work. Drop in and say hello.

Nick Ellis

Willoughby Community Men's Shed



Ted, Matthew and Oscar



Tiffany, Thea and Allegra

Care Packs for Indigenous Communities

For the past 11 years, Willoughby Community Preschool has had a strong relationship with our Sister Service, Gainmarra Birillee Preschool in Brewarrina, a small and primarily Indigenous community in Far North NSW.

Our Preschool children have recently engaged in a project during Dental Week learning about dental hygiene, our Sister Service, and compassion and caring for others. The project incorporated an initiative recently introduced by a fellow Preschool Director Terry Aizen, who recognised the need for basic health care necessities for children in remote Indigenous communities like in Brewarrina. Our Preschool children put together 150 Care Packs containing soap, a toothbrush, toothpaste, underwear, socks, tissues, band-aids & a shower puff. Each child drew a picture for their recipient and our Japanese families contributed origami hearts to also be included in the care packs. Our children took much joy in selecting and packing goodies for the care packs and felt like they were really helping another child who is just like them in many respects, but does not have the basic necessities of life that we all take for granted.

Our care packs will be distributed by the Gunawirra charity which supports Aboriginal country Preschools in northern NSW.

Dianne Minnett

Director – Willoughby Community Preschool Inc.

WE TREAT:

Lower Back Pain
Knee Pain
Foot Pain

NAREMBURN PODIATRY

ORTHOTICS Designed, Made & Fitted Here

**276 Willoughby Road,
Naremburn 2065**

We care for your

- Corns & Calluses
- Heel and Knee Pain
- Ingrown and Fungal Toenails
- Diabetic Foot Care
- Footwear Store
- Nail Surgery

WE
HAVE
MOVED

PODIATRY

We Specialise in Children's Feet

Health fund,
DVA & Medicare
rebate available

ONLINE BOOKING

www.naremburnpodiatry.com.au

8964 6648

EMERGE

FESTIVAL 2016

CELEBRATING NEW TALENT,
CULTURE AND COMMUNITY

SEPTEMBER
2016

emergefestival.com.au

A tale of two towers – the Channel 9 saga

As she sat on her family's front verandah on Dalleys Road, the late Dulcie Barret could see cows grazing on land that was once a dairy and would later become the Channel 9 site. Dulcie said the milk from Foster's Dairy was decidedly weak and was sometimes dryly referred to by locals as Foster's Lite.

The current Channel 9 site was part of three original five-acre land grants to Arthur Catlett, John Sylvester Ryan and Thomas Cronin in 1856. Catlett's land was subdivided for residential use in 1911. Ryan's and Cronin's land was not subdivided. Cronin's land was sold in 1904 to Robert Henry Foster, dairyman. He established 'St Leonard's Dairy'.

There were seven dairies in Willoughby prior to 1900 mostly in southern Willoughby. After Foster's Dairy was established two new dairies were established: J.R. Warner's Waratah Dairy' in 1914 and a second north of Robert Street. Two district deliveries were made each day. Residents took delivery of milk in their billy cans or saucepans.

A Dairy Farmers' Depot operated in Penshurst Street from 1950. In 1928 Foster claimed he was milking 180 hand-fed cows. Pictures held by the Department of Lands (1930 and 1934) show an iron milking shed on the site and Robert and wife Elizabeth's cottage on the northwest corner of their property fronting Artarmon Road (formerly Ryan Street). The dairy continued to operate until Foster's death in 1955. Elizabeth then subdivided the land into three lots:

- Lot A – (over 2 acres) purchased by Television Corporation Limited, later TCN Channel 9 in 1955
- Lot B – containing Foster's house was sold to TCN in 1961.
- Lot C – fronting Flat Rock Creek comprising 2 acres was purchased by Willoughby Council in 1956.

In 1954 licences were granted to TCN9 and ATN7. The original TCN9 transmission tower (560 feet or 170 metres) was erected by an Italian company that had built many towers in Europe. Willoughby had been chosen in preference to Summer Hill because of the former's elevation. History was made on 16 September 1956 when the first television telecast was made, ironically from a temporary studio in St David's Church Hall, Darlinghurst, because the Willoughby studio was still under construction.

The location of the Channel 9 Centre set up a series of running battles with local residents who claimed its introduction affected the environment and quality of life especially when it expanded into Scott Street and Richmond Avenue. In the early '60s a new large transmission tower was built. Locals complained about the long delay in demolishing the original tower, which finally took place in 1977. The issues of electromagnetic radiation as a health hazard and noise from the Channel 9 helicopter were matters of concern that were discussed at length at Naremburn Progress Association meetings.

The present transmission tower will remain even once Channel 9 moves off the site as it is owned by a private consortium, not Channel 9.

Kevin FitzPatrick
Central Street

**Join the NPA and have
your say.**

Who can join?

- Naremburn residents – 18 years and over;
- Non-resident Naremburn property owners;
- People who run businesses in Naremburn.

\$15 per person per annum/
\$10 Concession per person per annum

New members, please fill out the membership form at:

www.naremburnprogress.org.au

Membership renewals can pay online using your name as reference:

Acc Name: Naremburn Progress Association
BSB: 032 297 Acc. no.: 201 474



**Like us on
Facebook**
to hear about all
our exciting events

FLAT ROCK BREW CAFE

290 Willoughby Road NAREMBURN

Some great things happening at your local brewery.....!

- | | |
|---|--|
| ✓ Award winning craft beer brewed on site | ✓ Function room for up to 40 people available – great for school class parent events |
| ✓ Authentic English ale served from hand pump | ✓ Extensive local and international tap and bottle list |
| ✓ Great food | ✓ Families welcome |
| ✓ Beer tastings and food pairing events | ✓ Trivia Night |
| ✓ Brewery tours upon request | ✓ Monthly Home Brew Club |
| ✓ A fantastic atmosphere for everyone | |

TO BOOK A TABLE

email: flatrockbrewcafe@iinet.net.au **or sms:** 0427 466 004

Say Cheesemaking

Have you ever thought of doing something just a little bit different. Well, I have! When my BFF (best friend forever) suggested a cheese making course, I said why not. It was never on my bucket list, however, I thought it was time to try something new.

I signed up for the 'Omnom cheese making' course and went to meet the Cheese Making Queen at her workshop. My instructor's name is Marly and she is the human behind Omnom Cheese Making & Cultured Food. She graduated University with a Bachelor of Science, majored in Human Nutrition, which, with a love of food has brought her to where she is today.

There was a small group of 15 of us and Marley made us feel welcome. At the workshop, she demonstrated how to make three different cheese making recipes Chevre, Halloumi and Feta. No experience was necessary and the process was made very easy with Marley explaining each step along the way.

The cheese making recipes have been designed with the home kitchen in mind. For this reason, the recipes make use of regular kitchen equipment and ingredients wherever possible. The best news is that you can now buy full cream unhomogenised milk and goats milk from the supermarket.

The course is half a day and you get to eat the cheeses you make. I love the mystery behind it and the creative input where you can create many different flavors and cheese varieties from one starting point – milk. In the kit (which you can buy) there are lots more recipes and if you forget a step or 2 you can go online and watch the videos. You can also email Marley, who will give you support and advice.

Since the workshop, I've made all 3 cheeses and they were a hit and the more you make them the easier it gets. My favorite is the feta. Guess what my friends are getting for Christmas!

I hope I have inspired you and take the mystery out of cheese making!

For more information on the next workshop go to www.omnomcheese.com

Helene Kemp
Vice-president



Walkers Required

Do you have a little spare time to help deliver Naremburn Matters in the vicinity of Hamilton Street or the St Leonards area?

If so contact Viviane Leveaux at:

viviane.leveaux@bigpond.com

- or -

0431 777 547

Naremburn Community Gardens Spring 2016

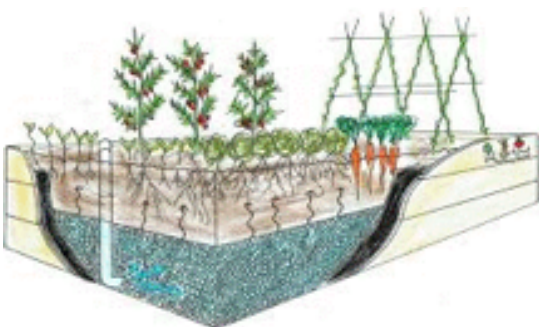


We have had a wonderful harvest of parsnips from the Bongalong garden and the Station St garden has been thriving.

The biggest difference between the two gardens is the bed design. The second, Station St, garden benefited from our experience and we put in all self-wicking beds but also

cascaded them down the hill to flow from top to bottom as each filled. This makes them easy-care.

We have also learnt a thing or two about the beds themselves. Several years with the first garden has taught us that self-wicking beds (diagram above), whilst requiring more effort to set up initially, reduce the ongoing effort considerably and produce far superior results.



The other lessons we have learned are:

- Beds wider than 1m cause difficulty as the bed is too large for the lining sheeting to fit easily;
- Wide beds also make it difficult to reach the middle of the bed adequately sometimes;
- Two sleeper high beds (400mm), rather than 3 sleeper high beds (600mm), perform better as the greater depth of soil doesn't wick as well and seedlings do not manage to survive so well;
- Planting more densely than advised helps when there are hungry possums around – we can always thin later, eat the young plants that we thin and the eventual numbers generally turn out to be about right;
- Don't bother planting lettuce after the first year, just let a couple go to seed and all you need to do is move the ones that pop up in irregular places.

Please feel free to drop by the garden when you are next in our neck of the woods.

Sue Howes
Naremburn Resident

Health Matters – Genetic Testing

Genetic testing involves analysis of a person's DNA and is used to detect genetic disorders.

The different types of genetic tests include:

Prenatal testing: Prenatal testing is offered during pregnancy to help identify foetuses that have certain diseases e.g. Down Syndrome.

Newborn screening: Newborn Screening is a public health funded system for testing the blood of newborn babies for a number of conditions including phenylketonuria (PKU), congenital hypothyroidism and cystic fibrosis.

Diagnostic testing: Diagnostic testing is used to precisely identify the disease which is making a person ill.

Carrier testing: Carriers may show no signs of the disease but they have the ability to pass on the gene change to their children. This type of testing is offered to individuals who have a family history of a genetic disorder and to people in certain ethnic groups with an increased risk of specific genetic conditions.

Predictive and presymptomatic testing: These tests are used to detect gene changes that increase a person's likelihood of developing diseases. Predictive testing informs individuals of an increased or decreased risk of developing the condition in question. This most often applies to cancer predisposition testing in which a positive result indicates a need for increased surveillance. Presymptomatic testing can confirm whether a person will develop a genetic disorder e.g. haemochromatosis, later in life.

Forensic testing: Forensic testing uses DNA sequences to identify an individual for legal purposes e.g. crime victims/suspects, paternity testing.

There are both advantages and disadvantages to genetic testing.

Test results can provide a sense of relief from uncertainty and help people make informed decisions about managing their health care. A positive result can direct a person toward available prevention, monitoring and treatment options. Some test results can also help people make decisions about having children.

The main disadvantage of testing is that a person may not be able to cope with the knowledge that they may have a life threatening or debilitating health problem they were unaware of. The other issue is that of cost with test costs ranging from less than \$100 to more than \$2000.

Although direct-to-consumer genetic testing is becoming increasingly available, it is advisable that testing be performed only after all the benefits, costs and implications have been discussed with your doctor.

Dr Raffi Sahagian
Willoughby Medical Practice

Did You Know?

In the 2011 census, Naremburn with a land area of 124 hectares had 5,433 usual residents, approximately 51.8% female, and 48.2% male. There were 2,459 total dwellings, with an average of 2.38 persons per dwelling.

Out of all the suburbs within the Willoughby local government area, Naremburn is the third smallest, with the second highest population density.

"Naremburn had a higher proportion of preschoolers and a lower

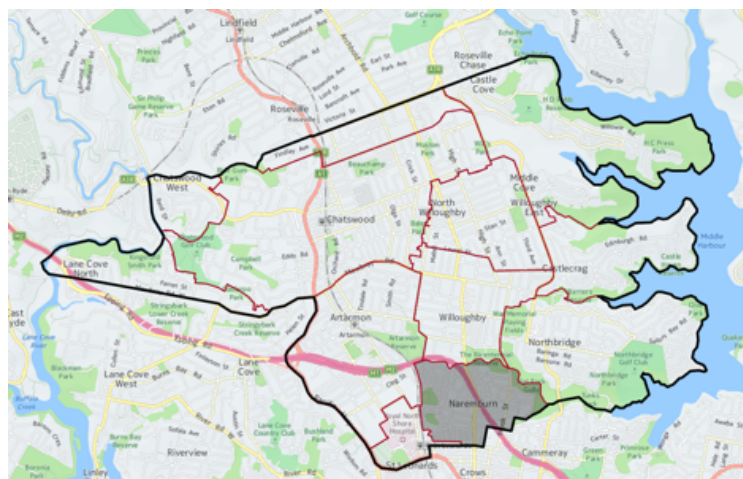
proportion of persons at post retirement age than Willoughby City in 2011"

With the 2016 census having been conducted on August 9, 2016, we'll soon find out how accurate the demographers were with their forecast of 5,902 residents in 2016.

Source: <http://forecast.id.com.au/willoughby>; <http://profile.id.com.au/willoughby/about/?WebID=150>; <http://naremburn.localstats.com.au/demographics/nsw/sydney/lower-north-shore/naremburn>

Ralph Youie
Committee Member

Suburb	Area ha		Population density	
	ha	Rank	persons/ha	Rank
Chatswood	493	1	42.56	3
Castle Cove / Middle Cove	388	2	11.25	11
Northbridge	282	3	21.04	9
Artarmon	255	4	33.8	6
Chatswood West/ Lane Cove North	164	5	21.42	8
Willoughby	161	6	37.4	5
Castle Crag	152	7	19.54	10
North Willoughby	150	8	38.72	4
Naremburn	124	9	43.74	2
Roseville	88	10	25.86	7
St Leonards	46	11	44.15	1



Naremburn Community Centre Activities

There are two spaces available for hire in the community centre.

There is a meeting room with its own kitchenette and toilet facilities and a larger area with its own projector.

These spaces can be hired through the Willoughby Park Centre (Ph. 9967 2917 or email

willpark@willoughby.nsw.gov.au)

Naremburn Progress Association

2nd Thursday – February, April, June, August, October and December
7:30 pm

0431 777 547 (Viviane Leveaux)

Playgroup

Wednesday – for children 5 and under
9:30 am to 11.30 am

naremburnplaygroup@gmail.com

Northern Suburbs Philatelic Society

3rd Thursday, 7:45 pm
Visitors always welcome
9419 7354 (Paul Storm)

Breast Feeding Association

1st Tuesday
10:00 am to 12 noon
abamns.contact@gmail.com

Willoughby Community Preschool

Monday to Friday
8:00 am to 4:00 pm
9437 4260

Naremburn Library

Mondays – 2:30 pm to 5:00 pm
Thursdays – 2:30 pm to 5:00 pm
Saturdays – 9:30 am to 12 noon
9439 5584

Bridges to Music

Tuesday – 4:00pm to 5:00pm
Wednesday – 3:30pm to 5:30pm
jeboyd@ozemail.com.au

7 Central Street



Update from Councilor Sloane

We Must All Speak Out

On Friday, 19th August, an unnamed 26-year-old woman died shortly after being taken to Walgett Hospital with stab wounds. Chances are you did not hear about this.

An unnamed 49-year-old man has been arrested for murder.

This brings the death toll for 2016 to 45 women – someone's mother, sister, daughter – and in some cases someone's wife.

Last year I met Rosie Batty. The Luke Batty Foundation – her lasting and powerful tribute to her son Luke, and the Never Alone campaign – bring focus and light to the topic of family violence in an extremely personal way.

As a mother, I am not sure that I would have the emotional strength, selflessness and single-minded focus to create something so positive out of such an unspeakable personal tragedy – the pain of which is almost impossible to comprehend.

Rosie, like many others before her, is calling on all Australians to speak out and to say – no, not ever – to family violence – this epidemic of violence, perpetrated largely against women and children is everyone's business.

According to www.ourwatch.org.au this is the picture of family violence in Australia today.

- A woman dies at the hands of a current or former partner almost every week in Australia. Some research suggests this rate is much higher.
- One woman in three has experienced physical violence, since the age of 15.2
- Women in Australia are three times more likely than men to experience violence at the hands of a partner.
- Almost half of the women who experience violence by an ex-partner said children had seen or heard the violence.
- Young women (18 – 24 years) experience significantly higher rates of physical and sexual violence than women in older age groups.
- 90% of Australian women with an intellectual disability have been subjected to sexual abuse
- Indigenous women experience significantly higher rates of domestic violence

In April last year, the North Shore Times reported that the north shore has the lowest REPORTED rates of domestic violence and apprehended domestic violence orders in NSW, but the only women's shelter in the region still had to turn people away. The article went on to report that there were 202 domestic assaults recorded across Willoughby (69), Lane Cove (33) and Ku-ring-gai (100) last year

Lifeline Harbour to Hawkesbury chief executive Wendy Carver said in 2014 more than 98,000 crisis calls were answered at their Gordon office alone.

This epidemic of violence is not confined to other parts of Sydney or the State – it is happening right around us. It takes enormous courage to speak out and takes significantly more courage to leave an abusive relationship particularly when children are involved.

All of us need to make it OK for women and young people to speak out, to feel supported and to know, that they are not alone.

The Chatswood Sleeps Rough www.chatswoodsleepsrough.com.au event is on again this year in August. Significant praise goes to The Chatswood Chamber of Commerce who has organised this event to raise awareness of the enormous challenges associated with domestic violence and youth homelessness – and the experience of sleeping on the streets, something that over 100,000 Australians do across the country every night. Willoughby City Council, Streetwork, the Salvation Army and Storage King have all got behind this event.

We must speak out about the horror that is family violence; we all have a role to play. For more information about what you can do: www.chatswoodsleepsrough.com.au; or www.neveralone.com.au or www.willoughby.nsw.gov.au/community/Domestic-Violence/

Michelle Sloane

Michelle.Sloane@Willoughby.nsw.gov.au